



# WinKFPT 5.1

- 1.
- 1.1 Online
- 1.2
- 1.3
- 2
- 2.1 WinKFPT
- 2.2 WinKFPT
  - 2.2.1
  - 2.2.2
  - 2.2.3
  - 2.2.4
- 2.3 WinKFPT
- 3.
- 3.1 WinKFPT
- 3.2 WinKFPT
- 3.3 WinKFPT
  - 3.3.1 WinKFPT
- 3.4 WinKFPT
  - 3.4.1 *COAPI.INI*
  - 3.4.2 *WINKFPT.INI*
  - 3.4.3 Expert Mode
  - 3.4.4 *EDIABAS.INI*
- 3.5 WinKFPT
- 4 WINKFPT
  - 4.1 WinKFPT
    - 4.1.1 WinKFPT
  - 4.2 WinKFPT
  - 4.3 WinKFPT Compile Mode ( )
  - 4.4 WinKFPT (Batch Mode)
    - 4.4.1
    - 4.4.2
    - 4.4.3
    - 4.4.4
    - 4.4.5

- 4.5 WinKFPT
  - 4.5.1
- 5 WINKFPT
  - 5.1 **Display**
    - 5.1.1 Display -> CABI.ERR
    - 5.1.2 Display -> ERROR.LOG
    - 5.1.3 Display -> PABD Parameters
    - 5.1.4 Display -> HW History
    - 5.1.5 Display -> ZB History
    - 5.1.6 Display -> ZB Rules
    - 5.1.7 Display -> API Trace File
    - 5.1.8 Display -> IFH Trace File
    - 5.1.9 Display -> Batch Mode
  - 5.2 **Import/Export**
    - 5.2.1 Import
    - 5.2.2 Export
    - 5.2.3
  - 5.3 **Communication**
    - 5.3.1 (HW Interface)
    - 5.3.2
  - 5.4 **Configuration**
  - 5.5 **Help**
    - 5.5.1 Content – -
    - 5.5.2 Info – WinKFPT
  - 5.6 End
    - 5.6.1
- 6 WINKFPT
  - 6.1 Function Start: WinKFPT
    - 6.1.1 (Comfort Mode)
    - 6.1.2 (Expert Mode)
- 7
  - 7.1
    - 7.1.1 : (ZUSB Number)
    - 7.1.2 : ( ZUSB number)
    - 7.1.3 : Assembly Identification
    - 7.1.4 : VIN

- 7.1.5 : Done (Comfort Mode)
- 7.2
  - 7.2.1 : Flash
  - 7.2.2 :
- 8
  - 8.1
    - 8.1.1 : PABD( )
    - 8.1.2 : P-SGBD ( )
  - 8.2
    - 8.2.1 :
    - 8.2.2 : - NAAB File ( )
    - 8.2.3 : - Program File ( )
    - 8.2.4 : - Data File( )
    - 8.2.5 : Done (Expert Mode)
  - 8.3
    - 8.3.1 : NAAB Data Set ( )
    - 8.3.2 : Program Data Set( )
    - 8.3.3 : Data Data Set ( )
- 9
  - 9.1
    - 9.1.1 : UIF ( )
    - 9.1.2 :
    - 9.1.3 :
    - 9.1.4 : VS20/DS2 Mode
    - 9.1.5 : EWS
    - 9.1.6 : Done
  - 9.2
    - 9.2.1 :
    - 9.2.2 :
    - 9.2.3 :
    - 9.2.4 : Done
- 10
  - 10.1 WINKFPT

10.2

10.2.1.

WinKFPT

10.2.2

10.2.3

10.2.4

**1** \_\_\_\_\_

**1.1** \_\_\_\_\_ **Online** \_\_\_\_\_

-  
WinKFPT.

**1.2** \_\_\_\_\_

2	WinKFPT.
3	WinKFPT.
4 WinKFPT	WinKFPT.
5 WinKFPT	(5-6) WinKFPT WinKFPT
6 WinKFPT	
7	flash-
8	flash-
9	
10	

**1.3** \_\_\_\_\_

DEFAULT.INI	
"Import file sets"	
12345	
"OK"	
<<ECU not responding>>	

<Configuration>	
"Operating modes"	

## 2

### 2.1 About WinKFPT

WinKFPT flash- ( ) ,

WinKFPT

, WinKFPT  
BMW,

WinKFPT – (BSU), COAPI  
( , ).

4.6.0, / COAPI

## 2.2 WinKFPT

### 2.2.1

WinKFPT,  
EDIABAS

### .2.2.2

WinKFPT :

–

Dialog mode	
Batch mode	
Compile mode	<p>PABD- PABD(<i>XXX.IPO</i>) "&lt;root&gt;\sgdat".</p>

2-1: WinKFPT

**2.2.3**

WinKFPT. flash- ,

1. ( ) (ZUSB No.),  
(VIN) , (ZUSB No.),  
flash- (UIF)

2.

3. PABD ( )  
,P-SGBD ( flash- )  
, flash- , "Read UIF" "ECU Status".

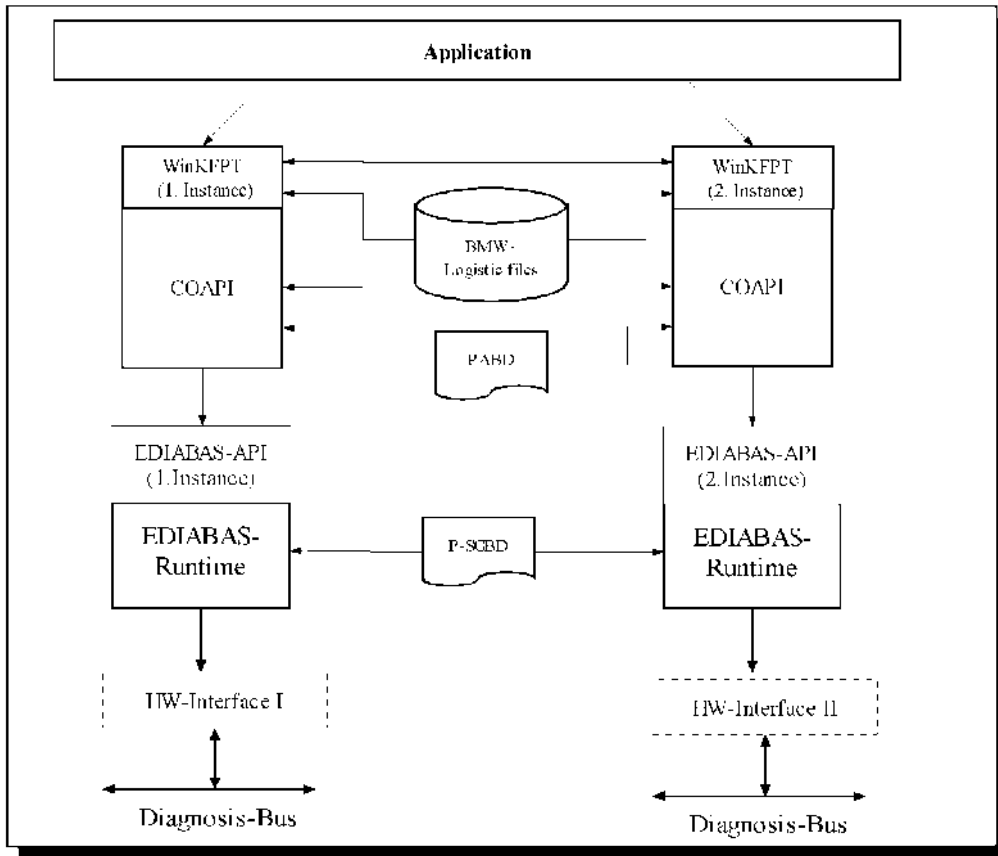
**2.2.**

flash-  
WinKFPT  
flash-



**2.3 WinKFPT**

WinKFPT,



**. 2-1: WinKFPT**

**3**

**3.1 WinKFPT**

flash-  
:

WinKFPT,

	PENTIUM II 64 MB RAM and 50 MB
	MS-Windows NT Version 4.0 or MS-Windows XP
	ADS, ADS-OBD, EDICcard, EDICcard2, EDICcardC, CANcard, CAN / Vector, Most / Optolyzer, Most / PC card or Funk / MDA
EDIABAS	6.0.2

**.3-1: WinKFPT**

### 3.2 WinKFPT

WinKFPT *WINKFPT32.EXE* .  
 (<root>)  
 UNINSTALL  
 1.4 , , WinKFPT .  
 (Comfort mode) PABD  
 P-SGBD (Expert mode)  
 WinKFPT ( "5.2 Import/Export "  
 REFMERGEFORMAT

### 3.3 WinKFPT

WinKFPT .  
 <root> :  
 WinKFPT:  
 •\<root>\BIN  
 WinKFPT:  
 • \<root>\CFGDAT  
 • \<root>\DATA  
 • \<root>\FORMAT  
 • \<root>\SGDAT  
 • \<root>\WORK  
 WinKFPT : ,  
 • *INSTALL.LOG*,  
 • *UNWISE.EXE*, WinKFPT.

\<root>\BIN	<i>WINKFPT.INI</i>	(EXE, DLL)
	<i>INNENTMP_INTERFACE_unit. OUT</i>	(
<i>CABIGER.DLL</i>		- DLL (German)
<i>CABUS.DLL</i>		- DLL (English)

	WINKFPT.INI	WinKFPT
	WINKFPT32.EXE WINKFPT32.HLP	WinKFPT
	ERROR_INTERFACE_unit. LOG 4.6.0, <Configuration>  *.OUT	WinKFPT. HW  INTERFACE HW interface identifier Unit identifier _unit ( A, B, C)
\<root>\CFGDAT	INPA.INI	WinKFPT  COAPI.
	COAPI.INI	
	COAPIERR.TXT EDIERROR.TXT	COAPI EDIABAS
\<root>\DATA\DEV ELOP	*.PAF *.DAF *.BAF	NAAB
	*.OPA *.ODA *.OBA	NAAB
\<root>\DATA\ GDATEN		flash-

	<p>..</p> <p><i>KFCONFxx.DA2</i></p> <p><i>HWNR.DA2</i></p> <p><i>NPV.DAT</i></p> <p><i>INFO. GER</i></p> <p><i>PRGIFSEL.DAT</i></p> <p><i>SGIDC.AS2</i></p> <p><i>SGIDD.AS2</i></p> <p><i>HISTORIE.BSU</i></p>	<p>4.6.0,</p> <p>WDP(</p> <p>).</p> <p>(HW)</p> <p>WinKFPT.</p> <p>:</p> <p>WinKFPT,</p> <p>"Passenger side, rear".</p> <p>&lt;Optional&gt; r Comfort mode (=</p> <p>)</p> <p>HW</p> <p>&lt;Optional&gt; flash-</p> <p>"3".</p> <p>&lt;Optional&gt;</p> <p>"4".</p> <p>&lt;Optional&gt;</p>
--	---	---

		<Optional>
\\<root>\DATA\<EcuFam>	<EcuFam>. : : <EcuFam>.DAT <EcuFam>.HIS <EcuFam>.HWH (HW)	ASCII
\\<root>\DATA\KONV	MoDiC/DIS	
\\<root>\DATA\KONV.TMP	WinKFPT \\<root>\DATA\KONV.TMP3 . ....	: \\<root>\DATA\KONV.TMP2,
\\<root>\SGDAT	: *.IPS PABD *.IPO PABD INPA.. (PABDs) ; CABI COAPI, WinKFPT CABI. PABD.	PABD
\\<root>\WORK	COAPI WinKFPT	COAPI.INI WinKFPT

3-2:

**WinKFPT**

**3.3.1**

**WinKFPT**

"Configuration" ( "5.4 Configuration ")

WinKFPT

WinKFPT.

**3.4 WinKFPT**

WinKFPT :

WINKFPT.INI	WinKFPT
EDIABAS.INI	

**3-3: WinKFPT**

**3.4.1 COAPI.INI**

"<root>\CFGDAT\COAPI.INI"

COAPI.

WinKFPT:

[Pfadangaben]			
WORKING_DIR	<root>	<root>\WORK	COAPI
ERROR_TEXTE	<root>	<root>\CFGDAT	COAPI
GENERAL_KF_DATA_PATH	<root>	<root>\DATA	
[Kennfeldprog]			
SERIENNUMMER	5-	12345	(UIF)
KUNDENNUMMER	5-	11111	(UIF)
KM	2-	0	

			(UIF).
ZBNUMMER <sup>3</sup>	7-	0000000	(UIF)
SWNUMMER <sup>3</sup>	7-	0000000	(UIF)
TYPNUMMER <sup>3</sup>	7-	0000000	(UIF)
AEINDEX <sup>3</sup>	2-	00	(UIF)
[Setup]			PABD WinKFPT.
CabdFormat	IPS IPO COM	IPO	COAPI WinKFPT) ( PABD   WinKfpt.ini  IPS – PABD IPO – PABD COM – WinKFPT IPS IPO- PABD-

BsuActive	ON OFF	ON	COAPI- coapiKfCheckBsuPossible D2 BsuActive=OFF NAAB- , . . . , historie.bsu , . COAPI.INI COAPI- coapiKfInit ()
-----------	-----------	----	--

3 ON ( EXPERT\_MIT\_AIF WINKFPT.INI )  
 . 3-4 COAPI.INI

**3.4.2 WINKFPT.INI**

"<root>\BIN\WINKFPT.INI" 2  
 WinKFPT.

WinKFPT:

[Einstellungen]			
WindowPosition		0,1,-1,-1, 1,-1,0,0, 643,424	WinKFPT
SPRACHE	ger eng	ger	WinKFPT. German (ger) English (eng).
U_PROG	ON OFF	ON	, flash-
SCHNELLE_BAUDRATE	ON OFF	ON	(ON) (OFF) flash-



ANZEIGE_U_PROG	ON OFF	ON	(ON) (OFF) flash-
EXPERT_MIT_AIF	ON OFF	ON	, (ON) (OFF) UIF flash-
KOMFORT_MIT_AIF	ON OFF	ON	, (ON) (OFF) UIF flash-
AIF_SCHREIBEN_NACH_DATEN	ON OFF	ON	, (ON) (OFF) UIF -
AIF_SCHREIBEN_NACH_PROGRAMM	ON OFF	ON	, (ON) (OFF) UIF -
API_TRACE	0 - 7 OFF (= 0) ON (= 1)	1	API EDIABAS flash- 0
IFH_TRACE	0 - 3 OFF (= 0) ON (= 1)	1	IFH EDIABAS flash- 0
PROGRAMM_ERZWINGEN	ON OFF	OFF	flash- ,
TEST_CHECKSUMME	ON OFF	ON	(OFF) (ON)
CabdFormat	IPS IPO (COM)	IPO	WinKFPT PABD

			IPS - PABD IPO - PABD COM - INI- "-C".
ErrorLogPath	any path	.\	ERRORn.LOG
ExpertKonfPath	any path	C:\Diagprog	(Expert mode).
KomfortKonfPath	any path	C:\NFS-Backup	(Comfort mode).
CoapiSearchPath	any path	..\	WinKFPT
[HW-Interface ]	WinKFPT		HW ::
<p>[Description] = [HW interface identifier]</p> <p>:</p> <p>K-Line / EDIC=EDIC</p> <p>K-Line / ADS-OBD=STD:OBD</p> <p>CAN / EDIC=EDICC</p> <p>CAN / Vector=STD:CAN</p> <p>Most / Optolyzer=STD: MOSTO</p> <p>Most / PC card=STD:MOSTP</p> <p>[Description].</p> <p>[Description] HW</p> <p>, Communication -&gt; HW Interface ( . K-Line / EDIC).</p> <p>[HW interface identifier] WinKFPT.</p> <p>HW- "EDIABAS" "EDIABAS"</p>			
[Expert-Modus-Konfiguration]	mode.	( )	Expert Expert

KF_HW_INTERFACE		HW-		HW- Expert mode.  Communication-HW Interface.
KF_HW_INTERFACE_UNIT	_, A, B, C, D, E			HW- Expert mode.  Communication-HW Interface
KF_DIAG_PROT				Expert mode; P-SGBD- ,(  )  .  Communication - Diagnosis protocol.
KF_PSGBD		P-SGBD-		P-SGBD- Expert mode. P-SGBD-  Expert Mode P-SGBD.
KF_PABD		PABD-		PABD - Expert mode. PABD -  Expert Mode PABD.
KF_SG_ADR				Expert mode.  Expert Mode ECU Address.
KF_DATEN_DATEI				Expert mode.  Expert Mode Data File.
KF_PROGRAMM_DATEI				Expert mode.  Expert Mode Program File.
KF_NAAB_DATEI		NAAB-		NAAB- Expert mode. NAAB-  Expert Mode NAAB File.

!	WinKFPT
---	---------

3-5: **WINKFPT.INI**

, WINKFPT.INI

/

,

,

.

### 4.3 Expert Mode

Expert

mode

..

Expert mode

::

• HW-

•

• P-SGBD -

• PABD -

•

•

•

• NAAB- ( )

HW-

**Communication HW**

**Interface** Expert mode ( "5.3.1 HW - ").

**Communication Diagnosis**

**Protocol** Expert mode ( . "5.3.2 ").

P- **"P-SGBD"** Expert mode ( . "8.1.2 : P-SGBD").

PABD **"PABD"** Expert mode ( . "8.1.1 : PABD").

**"ECU Address"** Expert mode ( . "8.2.1 : ").

**"Data File"** Expert mode ( . "8.2.4 : - ").

**"Program File"** Expert mode ( . "8.2.3 : - ").

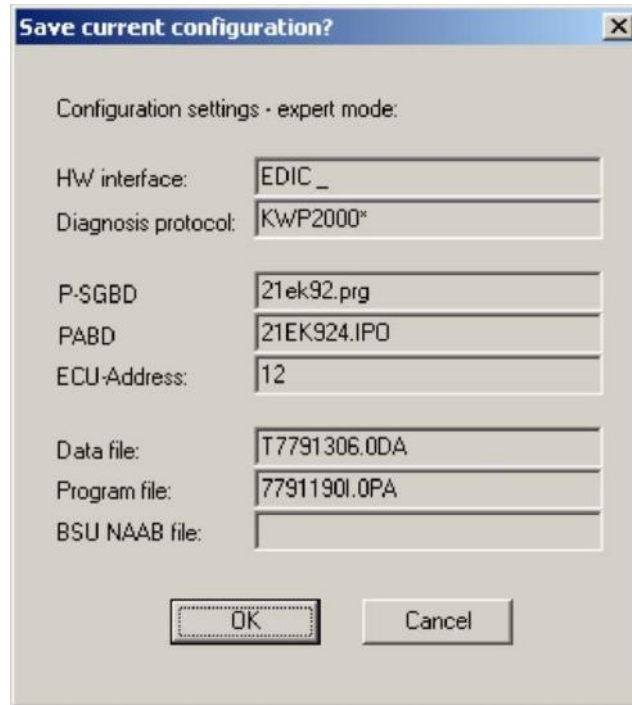
NAAB- **"NAAB File"** Expert mode ( . "8.2.2 : - NAAB - ").

**3.4.3.1** Expert Mode

WinKFPT, Expert mode

WinKFPT

:



. 3-1:

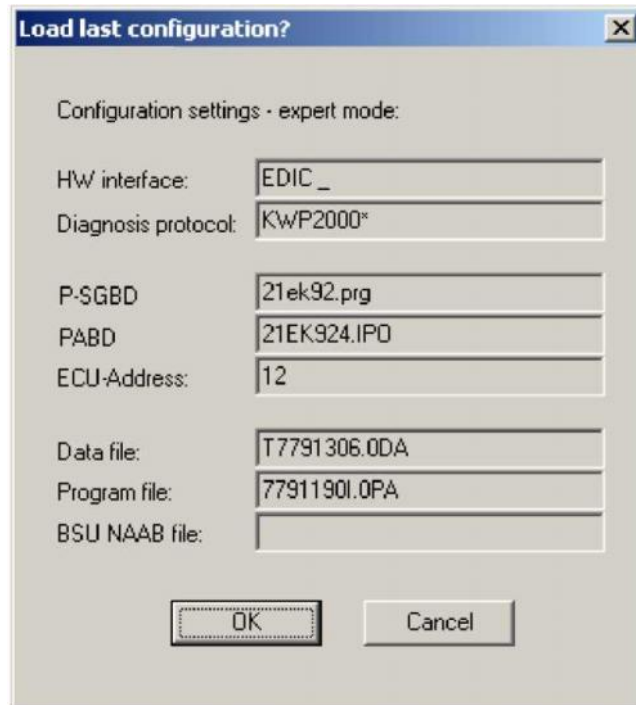
Expert mode

**3.4.3.2** Expert Mode

mode.

Expert

:



. 3-2: Expert mode "OK"

"Cancel".

PABD-

WinKFPT

( . "4.2 WinKFPT").

( . "8 Expert Mode").

### 3.4.3.3 Expert Mode

[Expert mode configuration] WINKFPT.INI.

- WinKFPT.
- t Expert mode, "Expert Mode".
- "Cancel" "Load last configuration?".
- WinKFPT End Exit.
- "Save last configuration?"

"OK".

WinKFPT  
configuration]

WinKFPT.INI

[Expert mode

**3.4.4 EDIABAS.INI**

"<ediabas>\CFGDAT\EDIABAS.INI"  
HW-

[Configuration]	EDIABAS.		
Interface		EDIC	HW- WinKFPT

**Table 3-6: EDIABAS.INI**

**3.5 WinKFPT**

WinKFPT

```

: Initialisierungsdatei fuer COAPIKF-Funktionen
[Pfadangaben]
ERROR_TEXTE = \CFGDAT
WORKING_DIR = \WORK
: genereller Pfad fuer Kennfeld-Daten
GENERAL_KF_DATA_PATH = \DATA

[Kennfeldprog]
TEMP DAT FILE DEFAULT NAME = KFLISTE.DAT

: Daten
SERIENNUMMER = 42324
KUNDENNUMMER = 12321
KM 0
ZBNUMMER = 000000
SWNUMMER = 000000
TYPNUMMER = 000000
AFINDEX = 00

: SG Dateien komprimieren
: 1 -> Dateien werden immer komprimiert (Für Datenupdate über Netz
: während Applikation läuft)
    
```

**. 3-3: WINKFPT.INI**

```

Sektion [Configuration]
:-----
: Interface
: Description : Connected diagnosis inte
: Default = 1
Interface=STD:OBD
    
```

**. 3-4: EDIABAS.INI**

## 4 STARTING WINKFPT

### WinKFPT

WinKFPT  
WinKFPT.

### 4.1 WinKFPT

WinKFPT:

-RUN		WinKFPT : winkfpt32 -RUN	
-BATCH=	<Control file>	:winkfpt32 -RUN BATCH=update_ek928	"<root>\bin\winfp t.ctf"
-INTERFACE=	<HW interface>	( HW- ADS, EDIC)  WinKFPT. Dialog mode "HW Interface". : winkfpt32 - INTERFACE=STD:OBD	Setting in "EDIABAS.INI"
-UNIT=	<Interface unit>	( , A, B, C, , Z)  WinKFPT.  Dialog mode "HW Interface". : winkfpt32 - UNIT=A	
WITH_MOSTFIREWALL=	<ON/OFF>	Relays the value to the PABD as the parameter "WITH_MOSTFIREWALL". Example:winkfpt32 - WITH_MOSTFIREWALL=ON	"OFF"
-TESTER_ID=	<Hex value>	Relays the value to the PABD as the parameter "TESTER_ID". Example: winkfpt32 -TESTER_ID=FA	"F1"
-C	<PABD file name>	Compiles an IPS file (PABD source file). CabdFormat=COM does <b>not</b> have to be set in WinKfpt.ini and coapi.ini. Example: winkfpt32 -C 16ek928	

.4-1.

WinKFPT



**4.1.1 WinKFPT**

WinKFPT 3 ::

- 1.
- 2.
- 3.

\_\_\_\_\_ :

• -C - WinKFPT -

• -RUN - WinKFPT

• no par. C -RUN WinKFPT

\_\_\_\_\_ :

• -BATCH

\_\_\_\_\_ :

• -INTERFACE

• -UNIT

• -WITH\_MOSTFIREWALL

• -TESTER\_ID

**4.2 WinKFPT**

flash-

ECU address	<p>« »</p> <p>.. : PABD uses an )</p> <p>- : Expert mode (Dialog mode).</p> <p>- Comfort mode (Dialog mode).</p> <p>- flash-</p>
Integration position	

	<p>( . Passenger seat, rear left). INFO.GER</p> <p>Comfort mode (Dialog mode).</p>
Vehicle identification number	<p>Comfort mode VIN : UIF flash- - Comfort mode (Dialog mode). - flash- Batch mode ( ).</p>
ZB number	<p>ZB ( ) . ZB- : Expert mode (Dialog mode) UIF ( ) ) flash- COAPI.INI flash- Comfort mode (Dialog mode).</p>
HW number	<p>: flash Expert mode (Dialog mode). flash Comfort mode (Dialog mode). flash Batch mode.</p>
HW interface	<p>HW-</p>
Interface unit	<p>-</p>
Diagnosis protocol	<p>2 .</p>
PABD	<p>: Expert mode (Dialog mode). Comfort mode (Dialog mode). flash Batch mode</p>
P-SGBD	<p>: Expert mode (Dialog mode). Comfort mode (Dialog mode). flash Batch mode.</p>
Progress bar	<p>(0 % - 100 % in 1 % increments). flash- ( ). / ,</p>

Boot sector update	( ACTIVATED NOT ACTIVATED). "Configuration".
--------------------	---

. 4-2: WinKFPT

### 4.3 WinKFPT

WinKFPT

: **winkfpt32 -C <filename>**

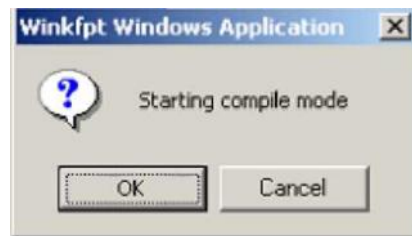
PABD- (= IPS- )  
WinKFPT

CabdFormat=COM

Winkfpt.ini and coapi.ini  
WinKFPT.

PABD-  
"<root>\sgdat"

10GD8600.IPS,  
WinKFPT



4-1.

"Cancel", WinKFPT

"OK", PABD

CABI.ERR

<root>\bin.



. 4-2:

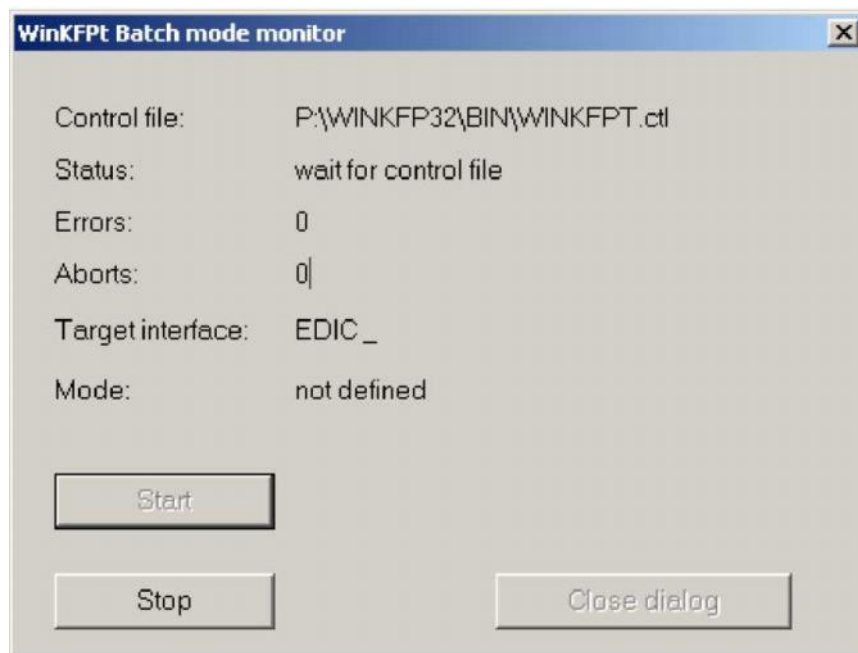


. 4-3:  
WinKFPT

"OK".

WinKFPT (WinKFPT

)



. 4-4:

(

)

:

Control file	(-BATCH=<controlfile>).
Status	<p>.</p> <p>:</p> <p>"not started"</p> <p>"started"</p> <p>"waiting for control file"</p> <p>"reading in control file"</p>

	"programming active" "waiting for end of programming" "programming ended" "no control file specified" "report file cannot be opened" "WinKFPT Batch mode error" "Batch cannot be started. Programming in progress"
Errors	
Aborts	flash-
Target interface	WinKFPT HW- flash- + t
Mode	( mode) Comfort mode Expert

4-3:

- "Start": WinKFPT
- "Stop":  
"Start"
- "Close dialog":

-BATCH=<controlfile>;

WinKFPT, <root\bin>.

**.CTL.**

#### 4.4.1

( WinKFPT "Comfort mode" ) (ZB- ,  
INI- WINDOWS

[FGNUMMER] ( ), [ZBNUMMER] ( ), [SGADRESSE] ( )  
 [BATCH].

:

[FGNUMMER]	[FGNUMMER] (VIN) : VIN=<VIN> : VIN=WBAA 31080AZ43446
[ZBNUMMER]	[ZBNUMMER] ( ) , : ZBNxxx=<ZB- >, xxx - 0000, : ZBN0000=7539765 ZBN0001=7539767
[SGADRESSE]	[SGADRESSE] ( ) , : SGADRxxx=<ECUaddress>, xxx - , 0000, .. : SGADR0000=12 SGADR0001=13 .. [ZBNUMMER] ZBN0000=7515985 [SGADRESSE] SGADR0000=A2
[BATCH]	[BATCH] : END=ON END=OFF. END=ON WinKFPT END=OFF. BATCH END=ON. RUN, WinKFPT FGNUMMER, ZBNUMMER SGADRESSE

. 4-4

WinKFPT

4.4.

WinKFPT "Expert mode" (PABD, P-SGBD,  
)  
, , ,  
INI- WINDOWS.  
: [MULTIFLASH]  
[MULTIFLASH]

MF_PABD	PABD- : MF_PABD=<PABD name> : MF_PABD=21EK928.IPO
MF_PSGBD	P-SGBD- : MF_PSGBD=<P-SGBD name> : MF_PSGBD=21EK92.PRG
MF_SG_ADR	: MF_SG_ADR=<PABD name> : MF_SG_ADR=12
MF_DATEN_DATEI	NAAB- : MF_DATEN_DATEI =< > : MF_DATEN_DATEI=Q7525491.0DA
MF_PROGRAMM_DATEI	NAAB- : MF_PROGRAMM_DATEI =< > : MF_PROGRAMM_DATEI=7523523A.0PA
MF_NAAB_DATEI	NAAB- NAAB- t: MF_PROGRAMM_DATEI =< NAAB- > : MF_NAAB_DATEI=555111_555222.0ba
MF_DIAGNOSEPROTOKOLL	: MF_DIAGNOSEPROTOKOLL=< > : MF_DIAGNOSEPROTOKOLL=KWP2000*
MF_FG_NUMMER	UIF : MF_FG_NUMMER=<VIN> : MF_FG_NUMMER WBAA 31080AZ43446

WinKFPT

**4.4.3**

---

WinKFPT

Batch mode

WinKFPT

Batch mode, EDIABAS-API

flash-

WinKFPT

**log-  
.PRT.**

log-

Comfort mode:

VIN, FGN=<VIN>.

ZB-

Expert mode:

PABD MF\_PABD=<PABD>.

P-SGBD MF\_PSGBD=<P-SGBD>.

MF\_SG\_ADR=<ECU address>.

MF\_DATEN\_DATEI=<Data file name>.

MF\_PROGRAMM\_DATEI=<Program file>.

NAAB- MF\_NAAB\_DATEI=<NAAB file>.

VIN, MF\_FG\_NUMMER=<VIN>.

MF\_DIAGNOSEPROTOKOLL=<Diagnosis protocol>.

:



"ERG=Programming OK"  
"ERG=Programming nOK. Abort"  
"ERG=Programming nOK. Fatal error"

log- WinKFPT  
INFOxxx=<Text>, xxx –

\_\_\_\_\_ :  
mode, WinKFPT . Comfort  
Expert mode, WinKFPT

**4.4.4 HW-**

---

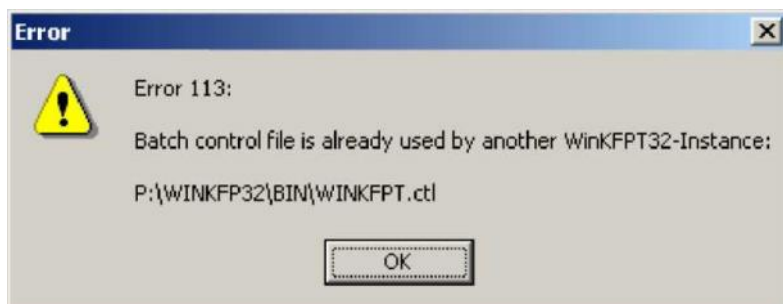
HW- Comfort mode  
\\<root>\DATA\GDATEN\PRGIFSEL.DAT.  
HW-

"PRGIFSEL.DAT'  
HW- ,  
" ,  
, P-SGBD–

**4.4.5**

---

WinKFPT  
(HW- , + )



```

WinKFPT -BATCH=<Control file>
( WinKFPT -RUN),
WinKFPT -RUN).
, HW WinKFPT +
WinKFPT WinKFPT
-UNIT=< WinKFPT -INTERFACE=<HW interface>
>.
WinKFPT
, . . HW- +
. HW-
, H-
, HW- , HW-
.

```

#### 4.5.1 WinKFPT

"-C" and "-RUN"  
 WinKFPT  
 WinKFPT WinKFPT

#### 4.5.

```

WinKFPT , 99
HW + or HW +
WinKFPT
, HW +
:

```





. 4-3

"OK",

## 5 **WINKFPT**

::

- <Display>
- <Import/Export>
- <Communication>
- <Configuration>
- <Help>
- <End>

### 5.1 **Display**

**Display**

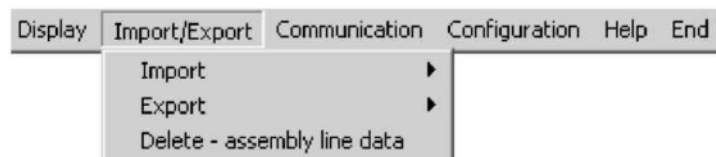
(ON OFF)

:

- <CABI.ERR>
- <ERROR.LOG>
- <PABD Parameters>
- <HW History>
- <ZB History>
- <ZB Rule>
- <API Trace File>
- <IFH Trace File>
- <Batch Mode>

- 5.1.1 Display **CABI.ERR**  
 CABI.ERR  
 PABD- (= IPS file).  
 OK "ESC" Alt+F4.
- 5.1.2 Display **ERROR.LOG**  
 ERROR\_INTERFACE\_UNIT.LOG  
COAPI CDH.  
 OK "ESC" Alt+F4.
- 5.1.3 Display **PABD Parameters**  
 PABD-\_\_\_\_\_.  
 OK "ESC" Alt+F4.
- 5.1.4 Display **HW History**  
 HW- HW- . OK  
 "ESC" Alt+F4.
- 5.1.5 Display **ZB History**  
 ZB- .  
 OK "ESC" Alt+F4.
- 5.1.6 Display **ZB Rules**  
 ZB- ..  
 OK "ESC" Alt+F4.
- 5.1.7 Display **API Trace File**  
 API EDIABAS.  
 OK "ESC" Alt+F4.
- 5.1.8 Display **IFH Trace File**  
 IFH EDIABAS.  
 OK "ESC" Alt+F4.
- 5.1.9 Display **Batch Mode**  
 .  
 .

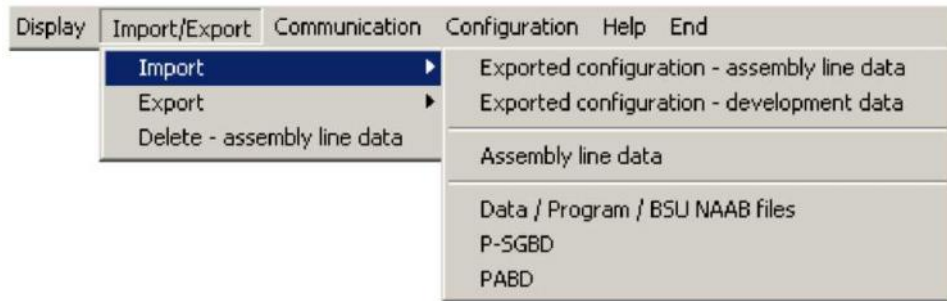
**5.2 Import/Export**



. 5-1:

**<Import/Export>**

**5.2.1 Import**



5-2: <Import> Import flash-

Data sets / Program releases / NAAB files	*.ODA *.DAF *.OPA *.PAF *.OBA *.BAF	NAAB NAAB
P-SGBD	*.PRG	P-SGBD
PABD	*.IPS *.IPO	PABD PABD
Assembly line data	*.ODA	
	*.OPA	
	*.OBA	NAAB
	*.PRG	P-SGBD
	*.IPS	PABD
	*.IPO	PABD
	*.DAT	
	*.DA2	
	*.HWH *.HIS	
	*.ATS *.ASD	
	*.AS2	
	*.GER	
	*.BSU	
		( )
Exported configuration development data		/ +
Exported configuration assembly line data -		+ +

5-1:

BSU NAAB, P-SGBD- PABD-  
"Expert mode".

"Comfort mode".

### 5.2.1.1 "Exported Configuration"

Import/Export -> Import -> Exported configuration - assembly line data.

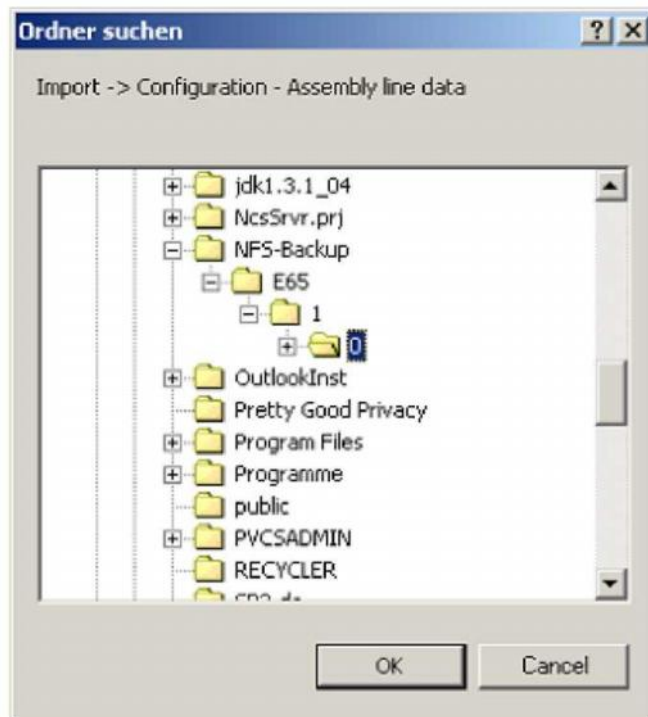


Fig. 5-3:

- "My Computer".

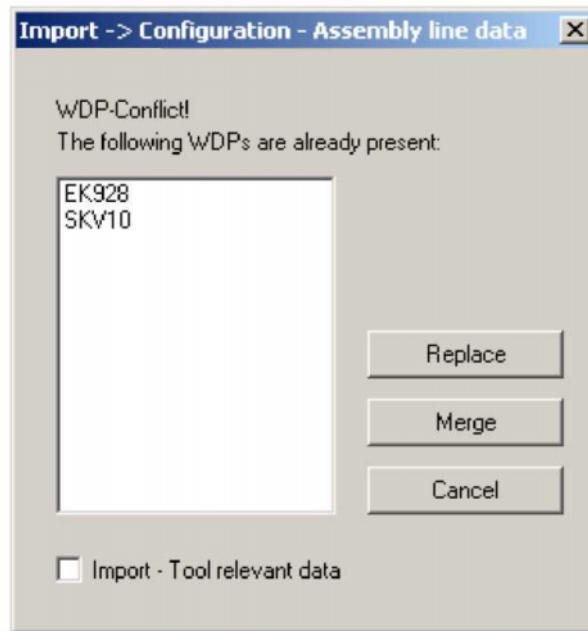
log- BACKUPEXPORT.LOG.

WDP ( )

WDP

"<root>\Data".

WDP  
"Replace", "Merge" "Cancel".



5-4

WDP

WDP

"Merge"  
"Replace"

"Import"

(INI files) ( "Import - Tool relevant data" ).

KMM-

• **Cancel** ( ):

• **Replace** **Import** ( ):

• **Merge** ( WDP ):

«  
**Replace Merge:**

*KFCONFXX.DA2* and *HWNR.DA2*:

Merge,

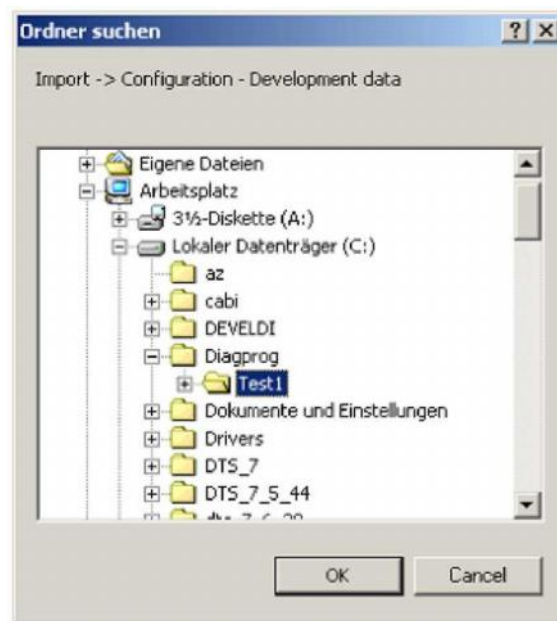
<ECUFAMILY>.DAT:

DAT-

"\$" «;»

### 5.2.1.2 "Exported Configuration"

Import/Export -> Import -> Exported configuration - development data.



. 5-5:

- "My Computer".

log-

CONFIGEXPORT.LOG.

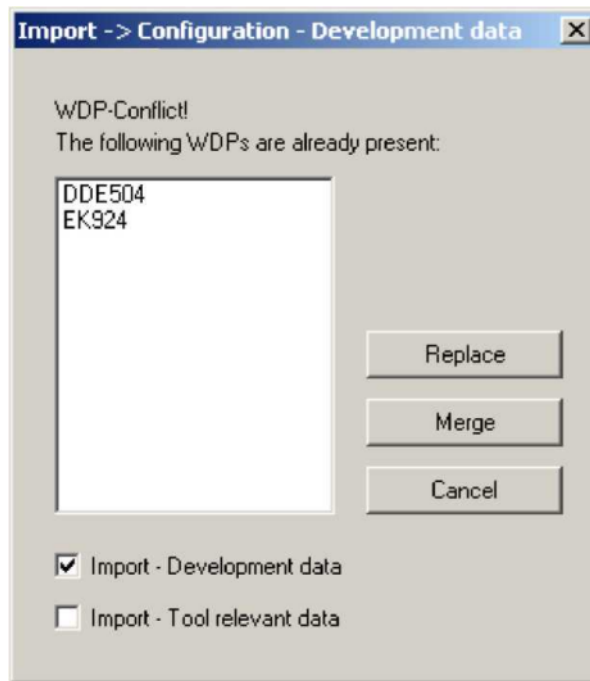
WDP ( )



WDP

"<root>\Data".

WDP  
"Replace", "Merge" "Cancel".



5-6

WDP

WDP

"Merge"  
"Replace"

"Import"

<basedirectory>\<configurationname>\Daten\Entwicklung\Data\Develop  
 <basedirectory>\<configurationname>\Daten\Entwicklung\Sgdat  
 <basedirectory>\<configurationname>\Daten\Entwicklung\Ecu directories ( "Import - Development files" ).

<basedirectory>\<configurationname> \Daten\Entwicklung\Data\Gdaten

(INI files) ( "Import - Tool relevant data" ).

- **Cancel** ( ):

- **Replace Import** ( ):

- Merge ( WDP ):

« »  
Replace Merge:

KFCONFXX.DA2 and HWNR.DA2:

Merge,

<ECUFAMILY>.DAT:

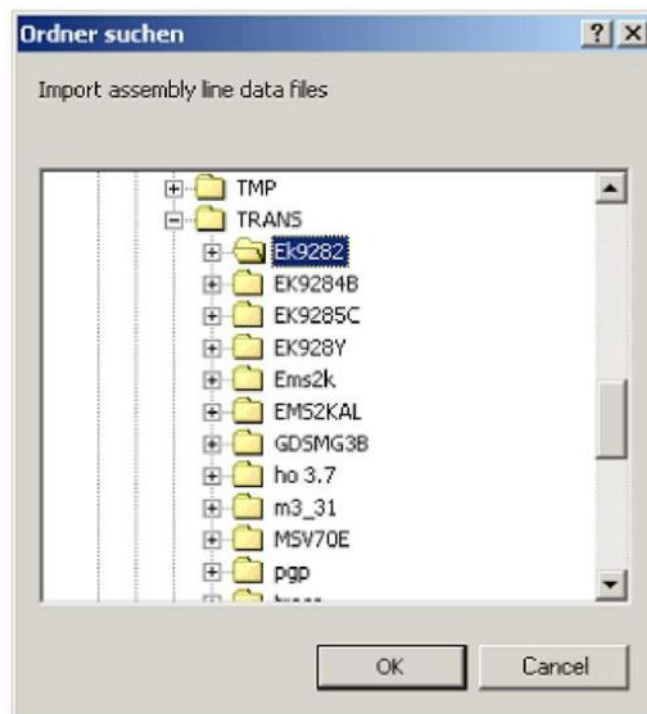
DAT-

"\$" «;»

### 5.2.1.3

Import/Export ->

Import -> Assembly line data.



. 5-7:

- "My Computer".

"G:\Trans".  
WinKFPT

"G:\Trans\EK9282"

"G:\Trans\EK9282"  
"EK928" ;  
"EK9282", "EK9294B" . . .

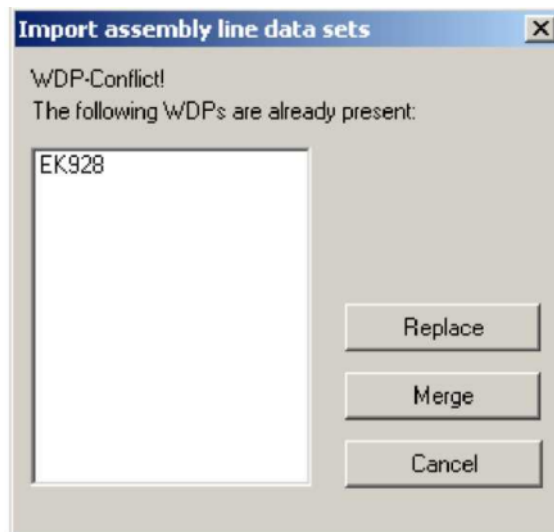
"G:\Trans",

WDP

"<root>\NFS\Data".

WDP

"Replace", "Merge" "Cancel"



5-8.

WDP

- **Cancel** ( ): ...
- **Replace Import** ( ): ...
- **Merge** ( WDP ): ...

« »  
**Replace Merge:**

KFCONFXX.DA2 and HWNR.DA2:

Merge,

<ECUFAMILY>.DAT:

DAT-

"\$" «;»

*.PRG	<ediabas>\ecu
*.IPS, *.IPO	<root>\SGDAT\
*.ASD, *.AS2, INFO.GER, HWNR.DA2, KFCNF.DA2, HWNR.DAT, NPV.DAT, KFCNF.DAT, HISTORIE.BSU	< root>\DATA\G DATEN
<ECUFAMILY>.DAT, *.0DA, *.0PA, *.0BA, *.HWH, *.HIS, *.ATS	<root>\DATA\<ecufam>

5-2

#### 5.2.1.4. NAAB-

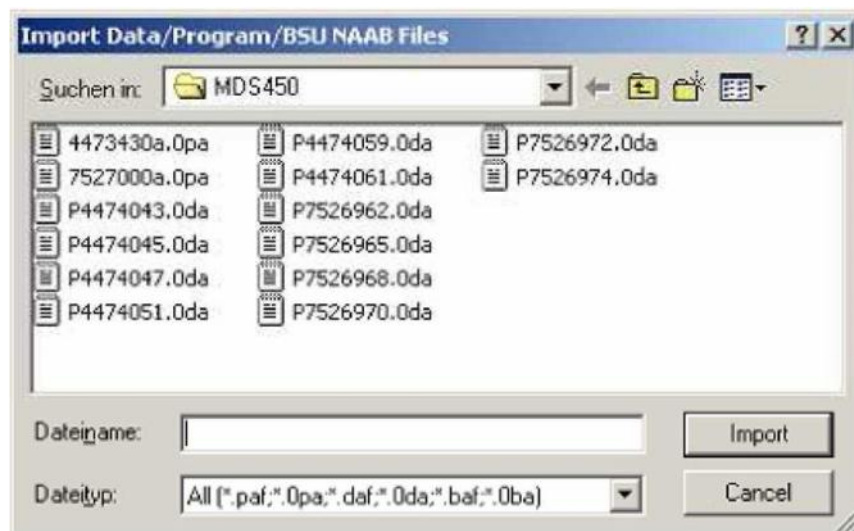
NAAB-

Import/Export -> Import -> Data / Program / BSU NAAB

files-

NAAB-

flash-



5-9

NAAB-

\*.BAF, \*.0BA, \*.PAF, \*.0PA, \*.DAF \*.0DA  
:

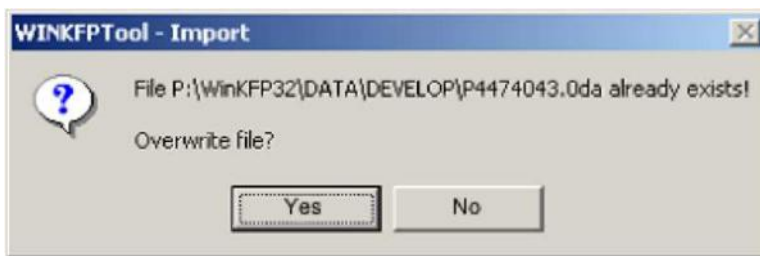
"Search in".

<Ctrl>

<Ctrl> + <A>.

"Import".

\<root>\data\develop



5-10

NAAB-

(0 - 100 %).

– NAAB-  
" "

","

:

"

Expert mode

### 5.2.1.5

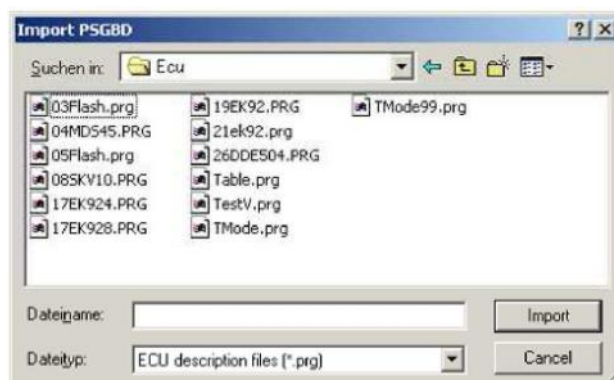
(P-SGBD)

P-SGBD  
SGBD.

Import/Export -> Import -> P-

P-SGBD,  
flash-

Expert mode



. 5-11:

P-SGBD

\*.PRG.

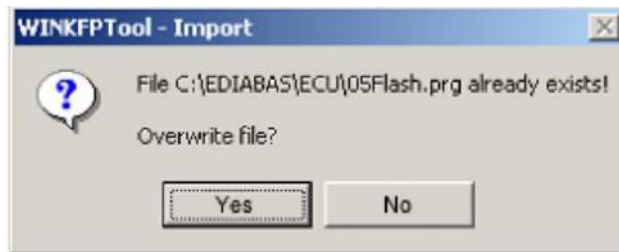
"Search in".

<Ctrl>

<Ctrl> + <A>.

"Import".

P-SGBD "<ediabas>\ecu"



5-12

P-SGBD

(0 - 100 %).  
"Load P-SGBD" Expert mode

### 5.2.1.6

(PABD)

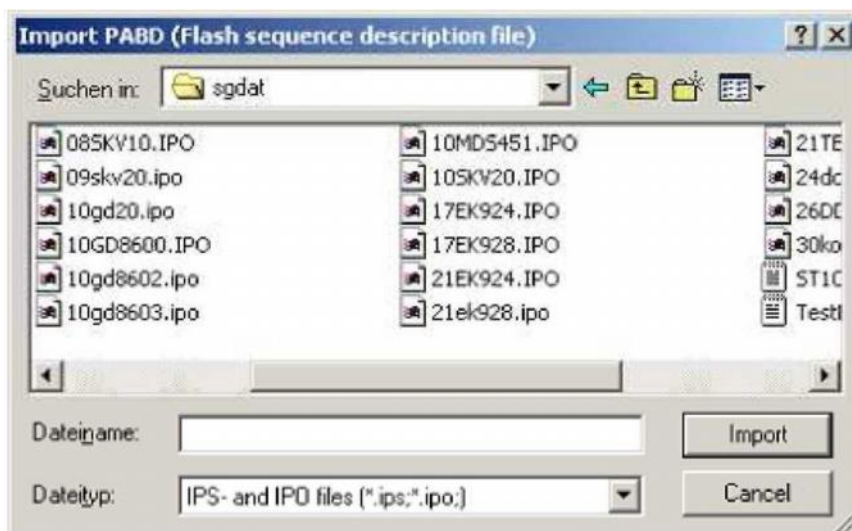
PABD

Import/Export -> Import -> PABD.

PABD,

flash-

Expert mode



5-13: PABD

\*.IPS and \*.IPO ( )

:

"Search in".

<Ctrl>

<Ctrl> + <A>.

"Import".

"\<root>\sgdat"

:



5-14

PABD

(0 - 100 %).

PABD " Expert mode

"Load

### 5.2.2 Export

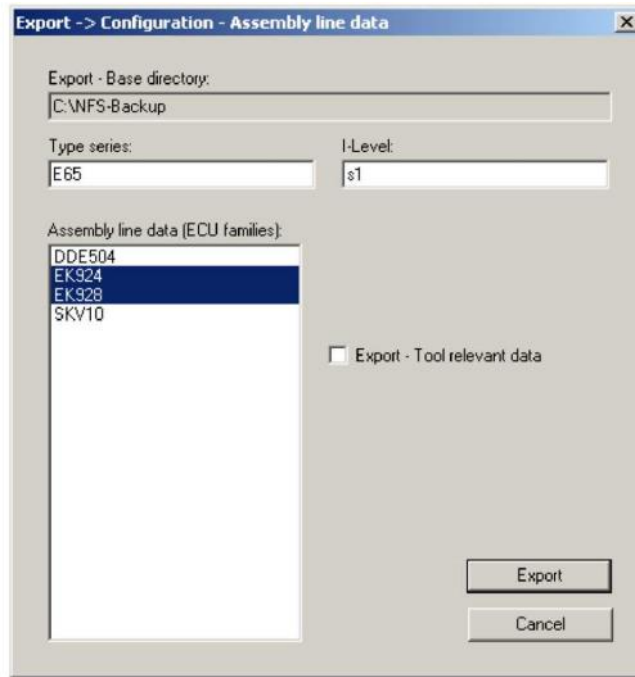


. 5-15:

<Export>

#### 5.2.2.1

Import/Export Export Configuration - assembly line data.



. 5-16:

, . . . <root>\NFS-Backup", ("Type series" "I-Level")  
 )  
 ,  
 ,  
 ,  
 ..  
 , KMM "
 KMM  
 ,  
 ,  
 and located ,  
 .

..

::

1.

2.



"BACKUPEXPORT.LOG"  
Level>\<index>\.

<root>\<NFS-Backup>\<typeseries>\<I-

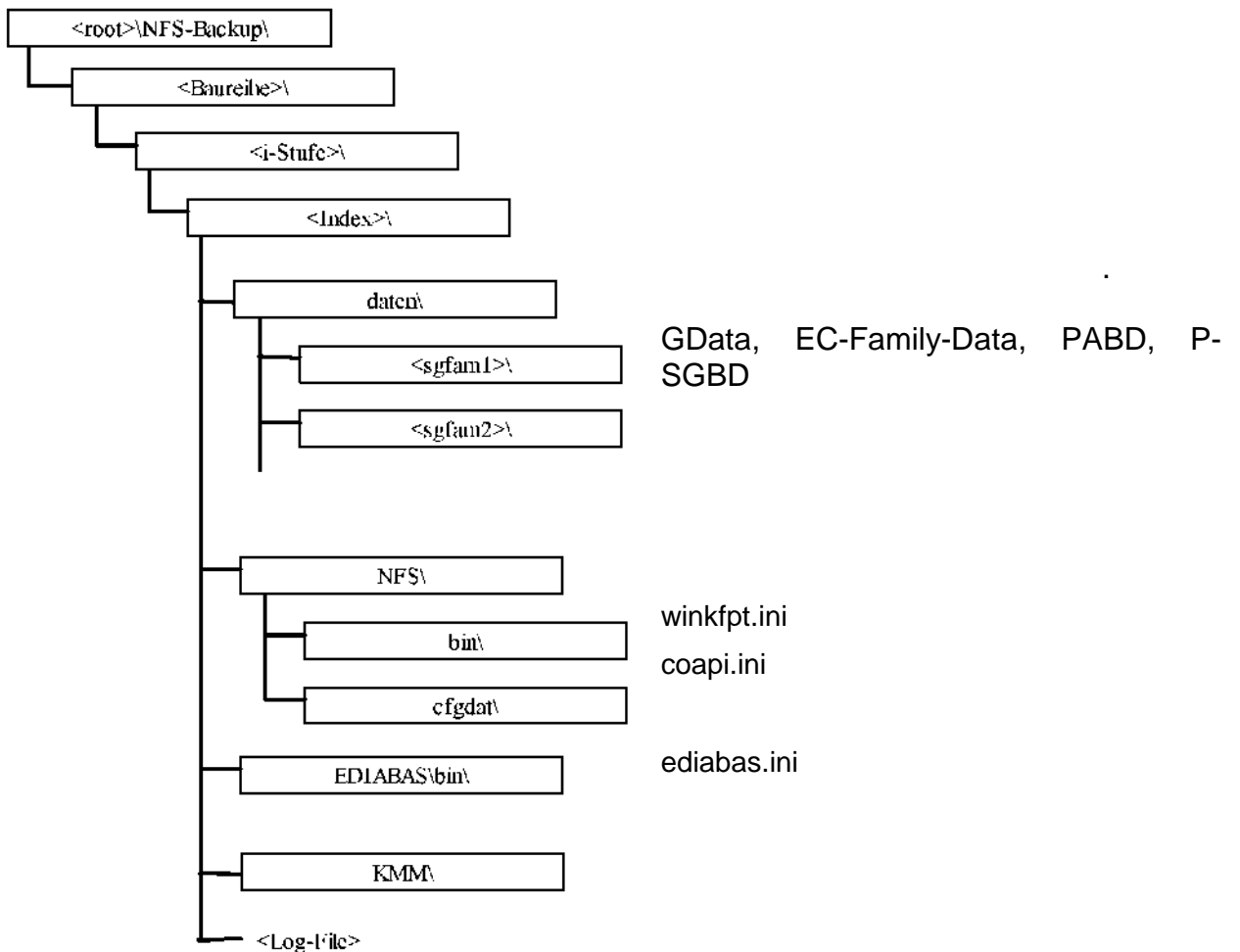
Backup>\<typeseries>\<I-Level>\<index>\),  
log-

(<root>\<NFS-

log-

- ( : dd.mm.yyyy)
- 
- 
- I-Level ( )
- Index
- /
- /
- 
- 

### 5.2.2.1.1



. 5-17:

**5.2.2.1.2**

---

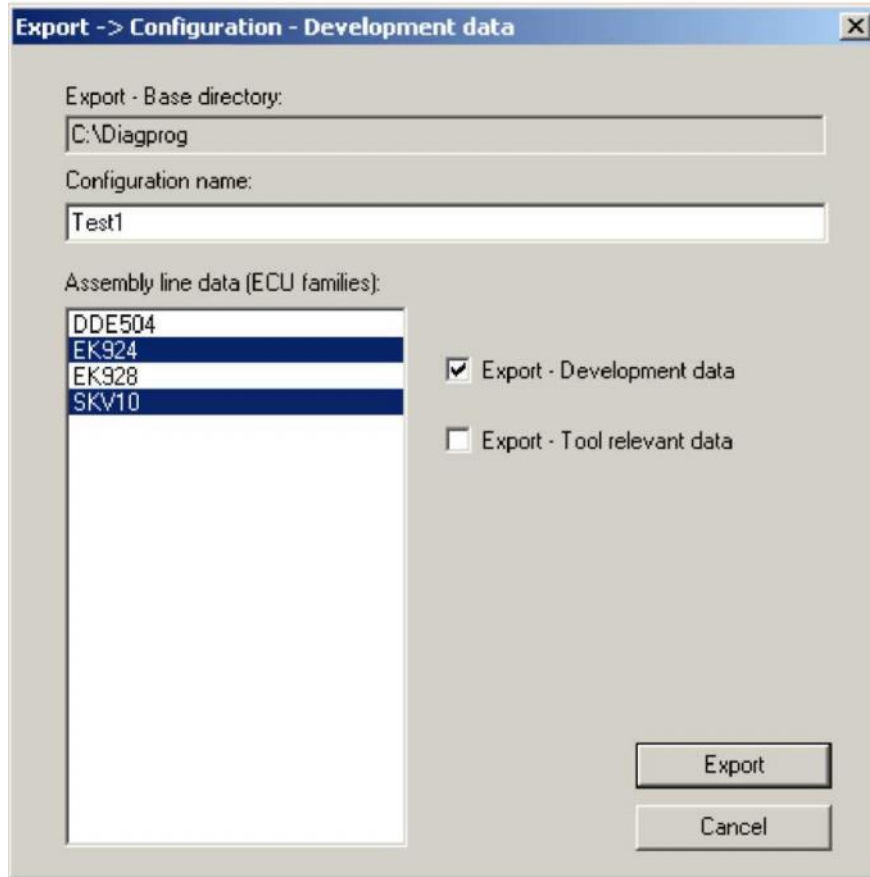
- WDP ( )
  - : \*.0PA, \*.0DA, \*.0BA , <ECUFAM>. DAT, <ECUFAM>.HIS, <ECUFAM>.HWH <ECUFAM>.ATS
  - <ecufam> e <root>\NFS-Backup>\<typeseries>\<I-Level>\<index>\daten\<ecufam>.
  - : SWTCONFX.DAT, HISTORIE.BSU, SGIDC.AS2, SGIDD.AS2 INFO.GER
  - <root>\Data\Gdaten <root>\<NFS-Backup>\<typeseries>\<I-Level>\<index>\daten\<ecufam>
  - HWNR.DA2 KFCONFXX.DA2
  - <root>\NFS-Backup>\<typeseries>\<I-Level>\<index>\daten\ <ecufam>.
  
- PABD:** WDP
  - KFCONFXX.DA2 <root>\Sgdat
  - <root>\<NFS-Backup>\<typeseries>\<I-Level>\<index>\daten\<ecufam>
- P-SGBD:** WDP
  - KFCONFXX.DA2 EDIABAS\ECU
  - <root>\<NFS-Backup>\<typeseries>\<I-Level>\<index>\daten\<ecufam>.
  
- KMM ( )
  - <root>\kmmdat\<typeseries>\
  - <root>\<NFS-Backup>\<typeseries>\<I-Level>\<Index>\kmm\ directory.
  
- ( )
  - \*.INI <root>\NFS\bin\
  - <root>\<NFS-Backup>\<typeseries>\<I-Level>\<Index>\bin\.
  - \*.INI and \*.DAT
  - <root>\cfgdat <root>\<NFS-Backup>\<typeseries>\<I-Level>\<Index>\cfgdat\..
  - \*.INI
  - <root>\EDIABAS\bin\ <root>\<NFS-Backup>\<typeseries>\<I-Level>\<Index>\EDIABAS\bin\ directory.

**5.2.2.2**

---

Import/Export -> Export -> Configuration - development data.

:



. 5-18:

, . . "<root>\Diagprog", ("Configuration name")  
 )  
 ,  
 ,  
 ,  
 ( )  
 ,  
 : ("Configuration name")



. 5-19

"Yes",



5-20

5.2.2.2

- :
  - :: \*.OPA, \*.ODA, \*.OBA, \*.PAF, \*.DAF  
 NFS\Data\Develop  
 <root>\Diagprog<configurationname>\Daten\Entwicklung\Develop.
  - : SWTCONFX.DAT, HISTORIE.BSU,  
 SGIDC.AS2, SGIDD.AS2, HWNR.DA2, INFO.GER KFCONFXX.  
 NFS\Data\Gdaten  
 <root>\Diagprog<configurationname>\Daten\Entwicklung\Gdaten
  - P-SGBD-** : \*.PRG- EDIABAS\ECU  
 <root>\Diagprog<configurationname>\Daten\Entwicklung\Ecu.
  - PABD-** : \*.IPS \*.IPO- NFS\Sgdat  
 <root>\Diagprog<configurationname>\Daten\Entwicklung\Sgdat.
- WDP ( ):
  - \*.ODA, \*.OBA <ECUFAM>. DAT, <ECUFAM>.HIS, <ECUFAM>.HWH  
 <ECUFAM>.ATS <ecufam>  
 <root>\Diagprog<configurationname> \Daten\<ecufam>.
  - : SWTCONFX.DAT, HISTORIE.BSU,  
 SGIDC.AS2, SGIDD.AS2 INFO.GER  
 NFS\Data\Gdaten <root>\Diagprog<configurationname>  
 \Daten\<ecufam> . HWNR.DA2  
 KFCONFXX.DA2  
 <root>\Diagprog<configurationname>\Daten\<ecufam> .
  - PABD:** , WDP  
 KFCONFXX.DA2 NFS\Sgdat  
 <root>\Diagprog<configurationname>\Daten\<ecufam> directory.
  - P-SGBD:** , WDP  
 KFCONFXX.DA2 EDIABAS\ECU  
 <<root>\Diagprog<configurationname>\Daten\<ecufam>
- ( )
  - \*.INI <root>\bin\  
 <root>\ Diagprog\\<configurationname>\NFS\bin\.
  - \*.INI and \*.DAT  
 <root>\cfgdat <root>\ Diagprog<configurationname>\NFS\cfgdat\.
  - \*.INI  
 <root>\EDIABAS\bin\  
 \EDIABAS\bin\ directory. <root>\ Diagprog<configurationname>

5.2.3

assembly line data.

Import/Export -> Delete -

:



. 5-21:

;

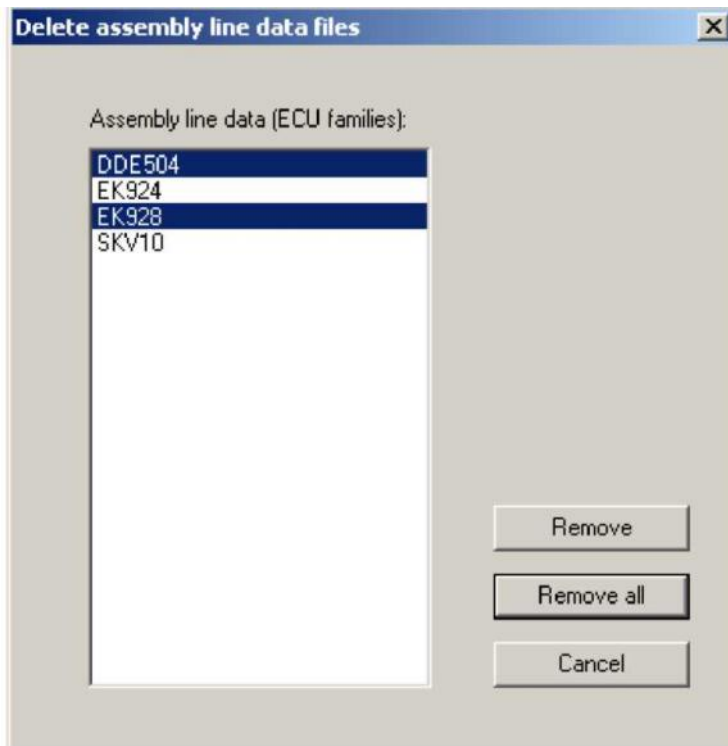
mode.

flash

flash-

Comfort

:



. 5-22:

( )

(SGBD/PABD)

"kfconfxx.da2", . . .

"Remove",

WDP

"kfconfxx.da2" "hwnr.da2".

:

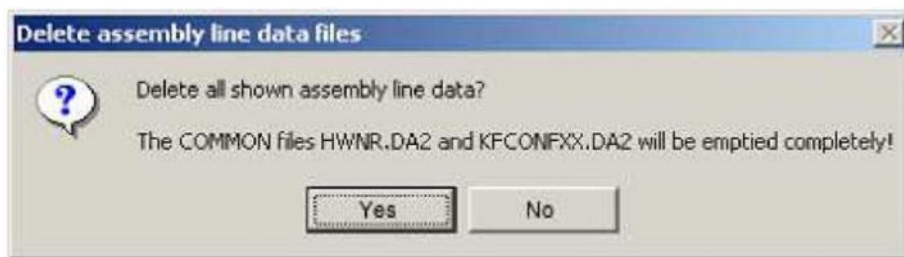


. 5-23: ; "Remove"

"Remove all", WDP  
 "kfconfxx.da2" "hwnr.da2"

, . « » WDP

:



. 5-24: ; "Remove all"

"Yes",

"No", ,

"Cancel", ,

### 5.3 Communication

WinKFPT :

- 
- 

"HW interface"  
 (EDIC, ADS, . .).

"HW interface"

WINKFPT.INI ( "3.4.2 Configuration in

WINKFPT.INI").

"Diagnosis protocol"

(BMW-Fast,

KWP2000, . .).

"Diagnosis protocol"

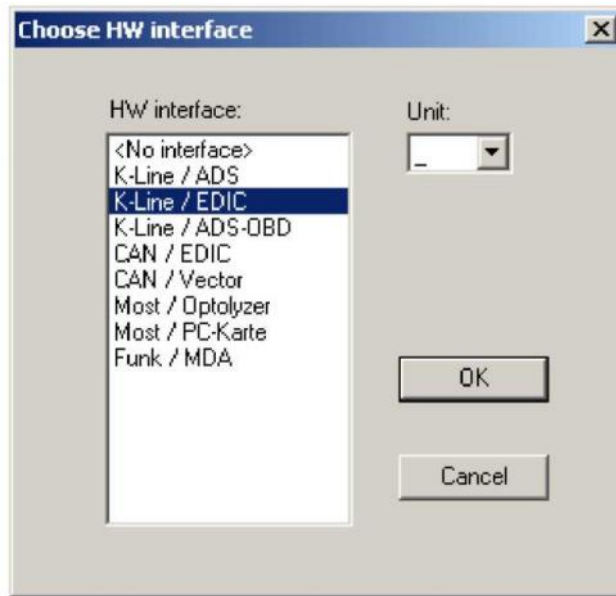
.  
 (Comfort mode)

PABD P-SGBD (Expert mode).

**5.3.1**

**Communication HW**

interface.



5-25:

"HW interface"

WINKFPT.INI.

WINKFPT.INI ( "3.4.2 Configuration in WINKFPT.INI")

(\_, A, B, C, D, E)

EDIABAS

"HW interface" .

- 
- 
- ( ) , " \_"

• "OK".

WinKFPT

"HW interface"

304 ( )





5-26:

WinKFPT



5-27:

Dialog mode

WinKFPT  
"EDIABAS.INI"

( . "3.4.4 Configuration in *EDIABAS.INI*").

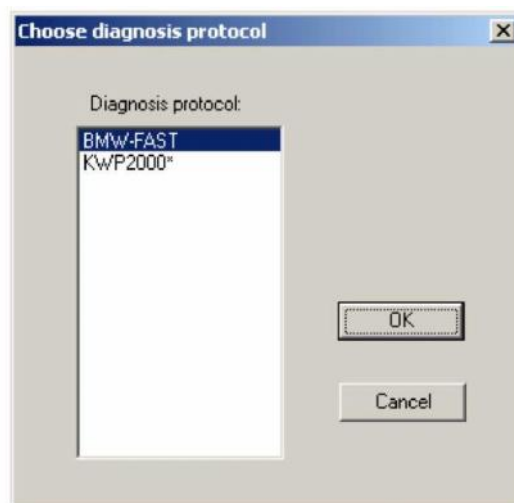
WinKFPT  
-INTERFACE=<HW interface> -UNIT=<Unit

identifier>.

### 5.3.2

### Communication Diagnosis

protocol.



5-28:

**"Diagnosis protocol"**

(Comfort mode)

PABD P-SGBD (Expert mode).

WinKFPT

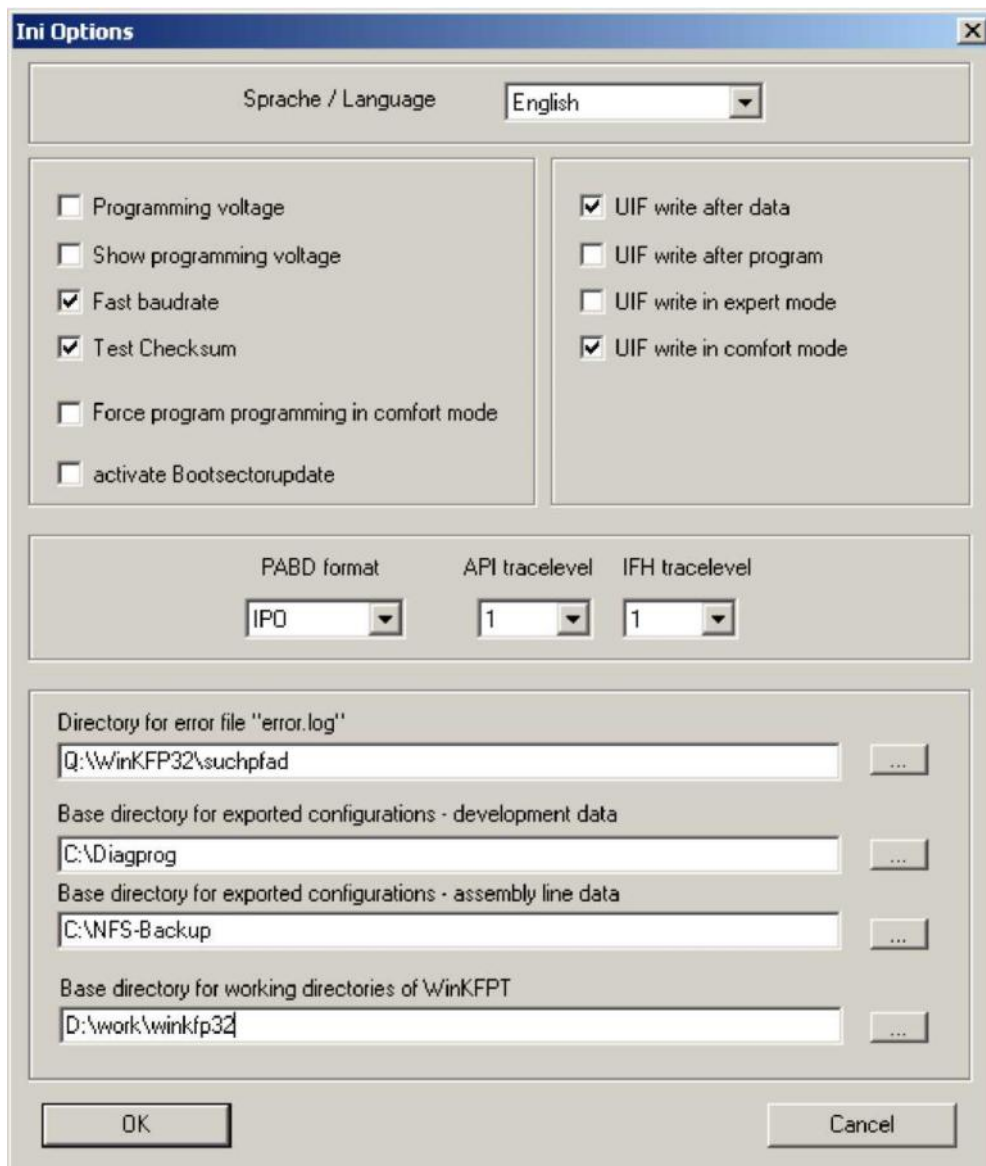
"DIAGNOSEPROTOKOLL\_LESEN"

P-SGBD.

**"Diagnosis protocol"**

"OK".

**5.4 Configuration**



. 5-29:

INI- :

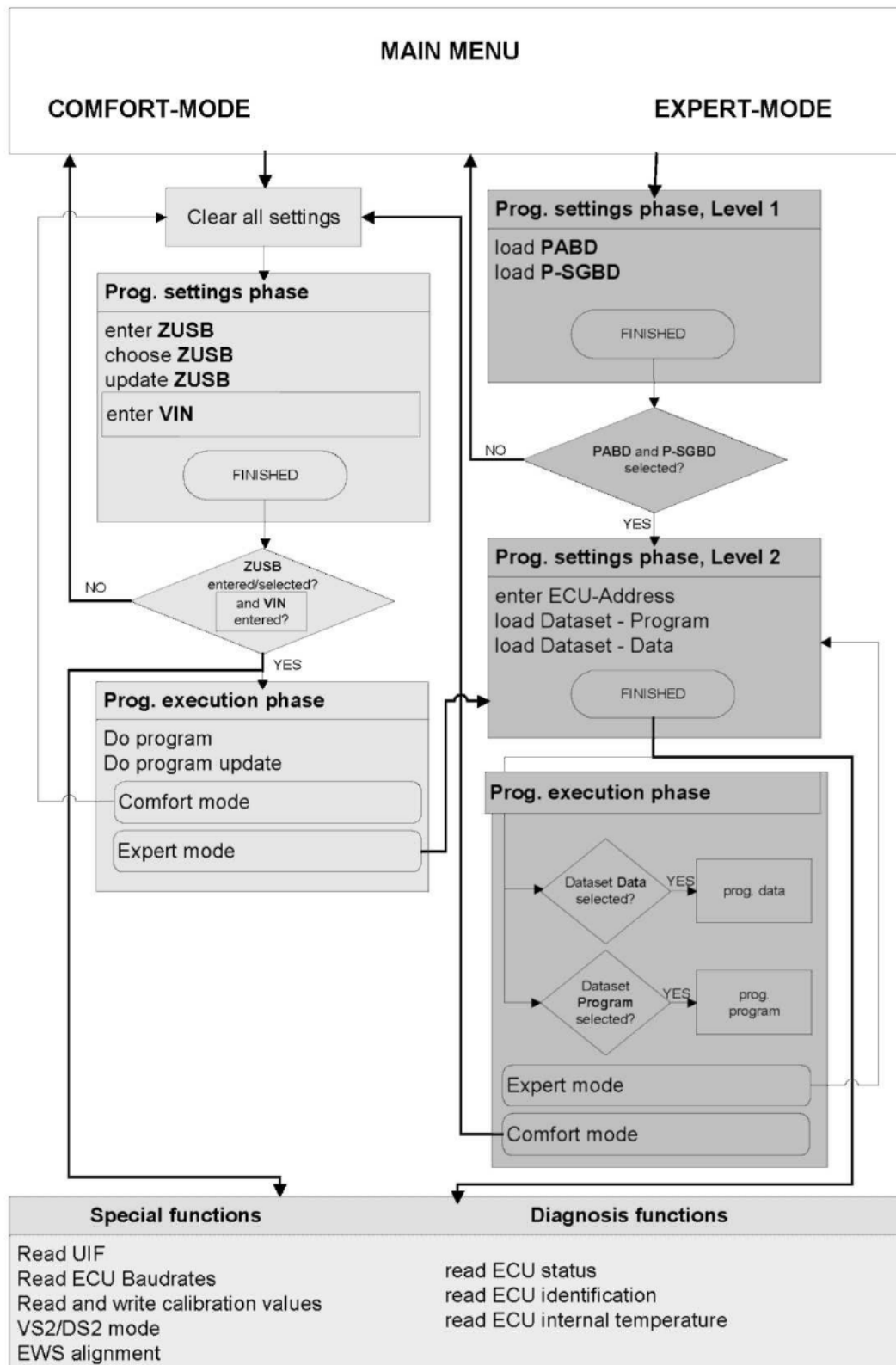
	INI-	
Sprache / Language	SPRACHE	WinKFPT. : German (ger) English (eng).
Programming voltage	U_PROG	ON OFF flash-
Show programming voltage	ANZEIGE_U_PROG	(ON) (OFF) flash-
Fast baudrate	SCHNELLE_BAUDRATE	(ON) (OFF) flash-
Test Checksum	TEST_CHECKSUMME	(ON) (OFF)
activate Bootsectorupdate	BsuActive	NAAB- flash of an
Force program programming in comfort mode	PROGRAMM_ERZWINGEN	flash- Comfort mode,
UIF write after data	AIF_SCHREIBEN_NACH_DATEN	(ON) (OFF) UIF Comfort Expert mode.
UIF write after program	AIF_SCHREIBEN_NACH_PROGRAMM	(ON) (OFF) UIF Comfort Expert mode
UIF write in expert mode	EXPERT_MIT_AIF	(ON) (OFF) UIF flash- Expert mode.

UIF write in comfort mode	KOMFORT_MIT_AIF	(OFF) UIF mode. (ON) flash-Comfort
PABD format	CabdFormat	WinKFPT PABD IPS :PABD IPO: PABD
API tracelevel	API_TRACE	– API Ediabas (0).
IFH tracelevel	IFH_TRACE	– IFH Ediabas (0).
Directory for error file "error.log"	ErrorLogPath	<i>ERRORn.LOG</i>
Base directory for exported configurations - assembly line data	KomfortKonfPath	(Comfort mode).
Base directory for working directories of WinKFPT	ExpertKonfPath	: cfgdat, data, sgdat etc.

"OK"

INI- , , INI-  
 , WinKFPT,  
 INI-  
 PABD PABD  
 PABD Expert mode PABD Comfort mode  
 (ZB- ).

**6 WINKFPT**



. 6-1: - WinKFPT

**6.1 : WinKFPT**

WinKFPT.

WinKFPT:

- Comfort mode
- Expert mode.



. 6-2:

WinKFPT

:  
 -  
 -  
 :  
 -  
 flash-  
 -  
 flash-  
 " " ( . "9  
 ").

Comfort mode	. < > .
Expert mode	P-SGBD PABD NAAB < >

. 6-1:

■ <Vehicle identification number>

VIN ( ) flash-

(UIF).

Flash- / UIF  
"winkfpt.ini".

■ \_\_\_\_\_

Expert mode

WinKFPT

■ \_\_\_\_\_

Comfort mode, flash-

BMW

**6.1.1 Comfort Mode**

flash- Comfort mode

flash- ( "5.2.1

Import ").

Comfort mode :

> (ZUSB ), VIN

UIF , flash-

>

BSU

**6.1.1.1 Comfort Mode**

Comfort mode "Comfort mode"

<F1>

"Comfort mode" :

(see "Fig. 6-1: Function start menu of WinKFPT").

Comfort mode ( " . 7-1: Comfort mode").

Expert mode ( . " . 8-1:

Expert mode").

PABDs i

IPO

Comfort mode.  
Comfort mode

IPS

:



. 6-3:

**Comfort mode**

"OK",  
"Cancel",

PABD  
Comfort mode.

IPO;

**"Comfort mode"**

Comfort mode  
required for flash-

**"Comfort mode"**,

Comfort mode

:

**ECU address integration position**

**Diagnosis protocol**

**PABD**

**P-SGBD**

:

**Vehicle identification number**

**Assembly identification number**

**Hardware number**

**"Comfort mode"**,

Expert mode

Expert mode.

**6.1.1.2 Comfort Mode**

Comfort mode

:

- Expert mode

- Comfort mode.

Expert mode

**"Expert mode"**.

**"Expert mode"**,

Comfort mode:

**Vehicle identification number**



**Assembly identification number**

**Hardware number**

:

- ECU address integration position
- Diagnosis protocol
- PABD
- P-SGBD

Expert mode  
 2 ( : . 8-1: -  
 2 Expert mode).

Comfort mode

:

**Expert mode**

Cancel ( )

Done (<F8> Expert mode)

**Comfort mode**

Done (<F8> Comfort mode)

WinKFPT ( 6-2  
 WinKFPT)

**6.1.2 Expert Mode**

(PABD, P-SGBD

) flash-

flash- Expert mode  
 ( . "5.2.1

Import ").

Expert mode

...

-

-« » « »

-

,

!

”

,

,

.

Expert mode, (GUI)  
 (ZB number)  
 "COAPI.INI", EXPERT\_MIT\_AIF=ON  
 "WINKFPT.INI".  
 ZB- UIF.  
 UIF ZB – , :  
 - WinKFPT.  
 - "COAPI.INI" ( . "3.4.1" COAPI.INI").  
 - WinKFPT.

### 6.1.2.1 Expert Mode

Expert mode "Expert mode" <F2>  
 "Expert mode" :  
 - ( . " . 6-1:  
 WinKFPT").  
 - Comfort mode ( . " . 7-  
 1: Comfort mode").  
 - Expert mode ( . " . 8-1:  
 Expert mode").  
 "Expert mode" -  
 1 2 Expert mode ,  
 flash- .  
 "Expert mode",  
 Expert mode :  
 "Expert mode",  
 Comfort mode :

- Vehicle identification number
- Assembly identification number
- Hardware number
- ECU address integration position
- Diagnosis protocol
- PABD
- P-SGBD

**6.1.2.2 Expert Mode**

Expert mode Comfort mode.  
 Comfort mode "Comfort mode".  
 "Comfort mode", Expert mode  
 , Expert mode

**7 COMFORT MODE**

Comfort mode :  
 -  
 -  
 , flash-  
 flash-

		,
	<ul style="list-style-type: none"> <li>• ZUSB</li> <li>• ZUSB</li> <li>•</li> <li>• VIN</li> <li>• e</li> </ul>	
	<ul style="list-style-type: none"> <li>• ZUSB</li> <li>• ZUSB</li> <li>•</li> <li>•</li> </ul>	( )

. 7-1 Comfort mode

**7.1 Comfort Mode**

Comfort mode:  
 :  
 - ZUSB-  
 - ZUSB-  
 -  
 -  
 -

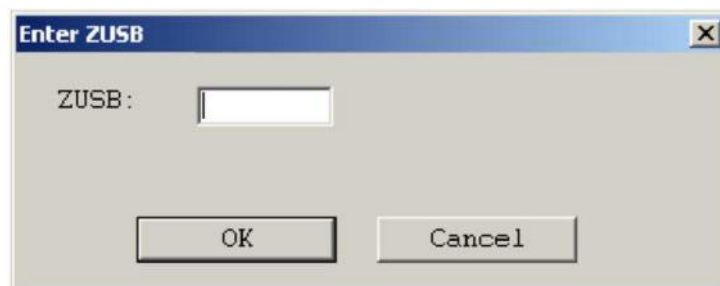


7-1

Comfort mode

**7.1.1 : ZUSB-**

ZUSB- "Enter ZUSB"  
 <F1>  
 (ZUSB- ).

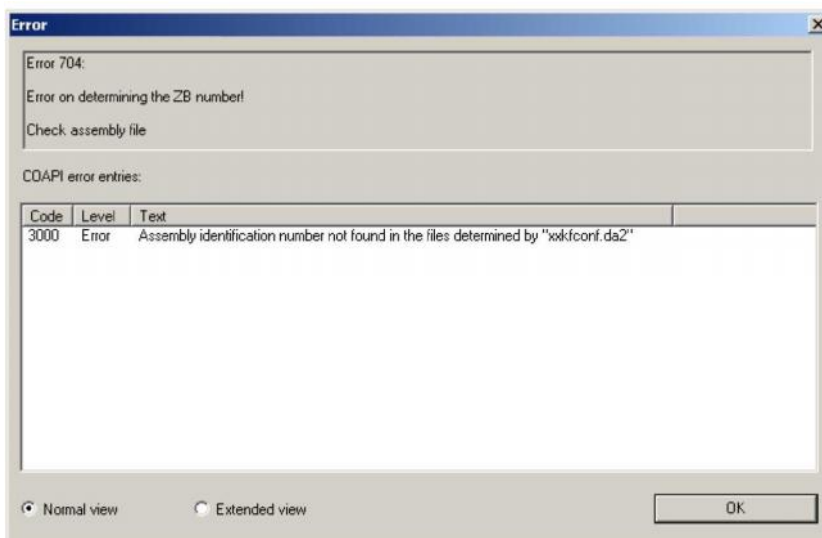


7-2

ZUSB-

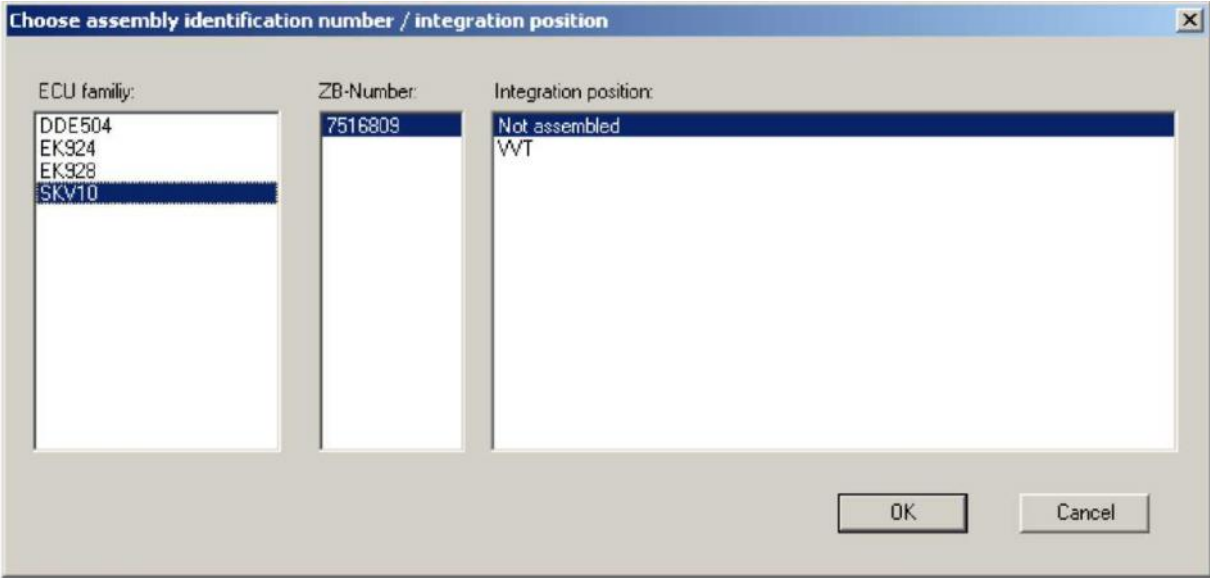
!  
 ZUSB-  
 "Cancel",  
 "OK", WinKFPT  
 <EcuFam>.DAT  
 \<root>\DATA.

, ZUSB-



7-2

-ZUSB-



7-3:

ZUSB - "7.1.2 :"

position" "Integration"

"Cancel", ZB-

"OK", ZB-

7.1.2 : ZUSB-

ZUSB- "Choose ZUSB"  
<F2>

7-3:

• "ECU family"

• "ZB Number"

• "Integration position"

"ECU family"

<ecufam>.DAT,

ZB-

\<root>\data\<ecufam>.

"ZB Number"

<ecufam>.DAT

"Integration position"

\<root>\data\gdaten\INFO.ENG

position"

"Integration

"Cancel",

ZB-

"OK", ZB-

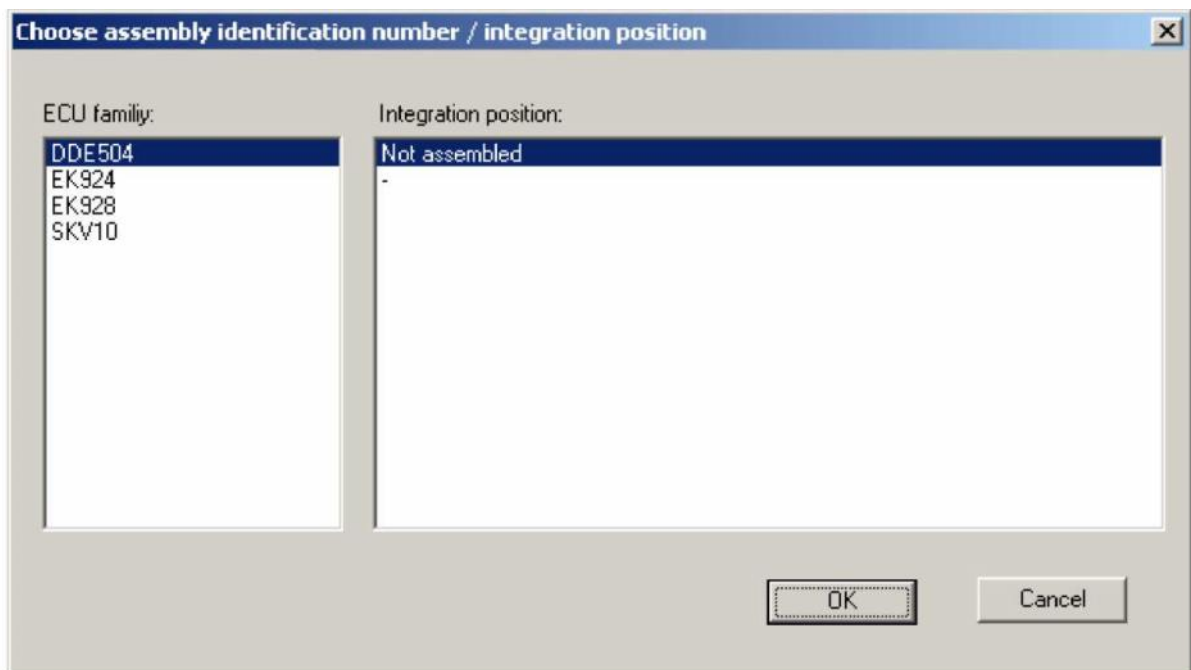
7.1.3

:

ZUSB"

<F3>

"Update



. 7-4:

•"ECU family"

•"Integration position"

"ECU family"

<ecufam>.DAT,

ZB-

\<root>\data\<ecufam>.

"Integration position"

\<root>\data\gdaten\INFO.ENG

position"

"Integration

"Cancel",

ZB-

"OK",

(

)

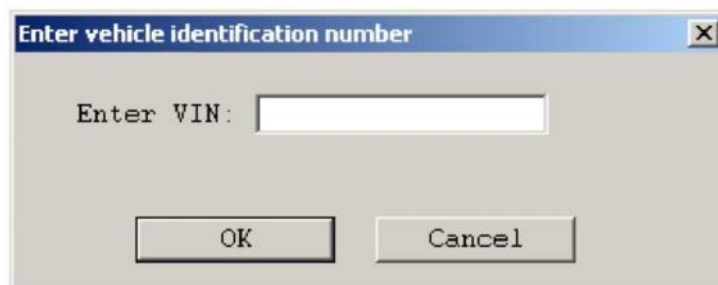
7.1.4

<F4>

"Enter VIN"

KOMFORT\_MIT\_AIF=ON

WINKFPT.INI



. 7-5:

!

7 17 -

::



. 7-6:

"Cancel",  
"OK",

:

"Enter ZUSB" "Choose ZUSB",  
f KOMFORT\_MIT\_AIF=ON WINKFPT.INI Flash-

"Update ZUSB",  
"Enter VIN"

UIF

UIF.

"Enter VIN",

UIF.

**7.1.5 : Done (Comfort Mode)**

"Done"

Comfort mode.

"Done"

<F8>

( . . 6-1:

WinKFPT).

ZUSB",

"Enter ZUSB" "Choose  
"Program"

Comfort mode

:

**KOMFORT\_MIT\_AIF=ON**

WINKFPT.INI,

flash-

( . . 9-1:

"Special" "Diagnosis").

•

"Update ZUSB",

"Prog. ZB-Update"  
Comfort mode.



**7.2**

**Comfort Mode**

Comfort mode:

" / "

" "

" "

" "

" "

" "

"PABD"

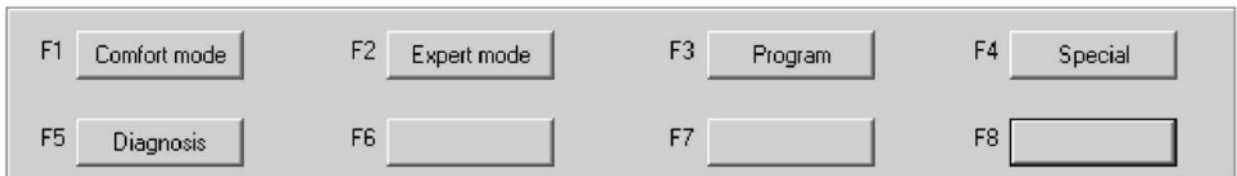
"P-SGBD"

The following functions are available in the programming execution phase of Comfort mode:

- flash- ( )
- flash – ( )
- (Special, Diagnosis)

Comfort mode Expert  
Comfort mode

mode.



7-7

Comfort mode

**7.2.1 : Flash -**

"Program".

only ZUSB-  
"Enter ZUSB" "Choose ZUSB" / ( )  
KOMFORT\_MIT\_AIF=ON WINKFPT.INI)  
Comfort mode.

"Program" <F3>

flash-

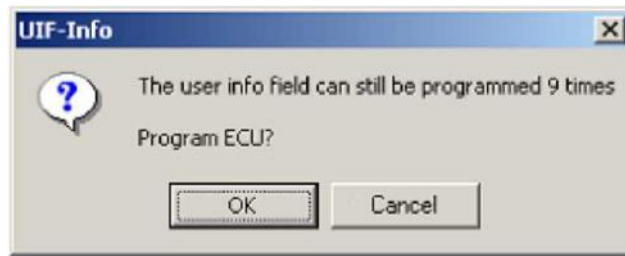
Comfort mode.

KOMFORT\_MIT\_AIF=ON

WINKFPT.INI ,

flash-

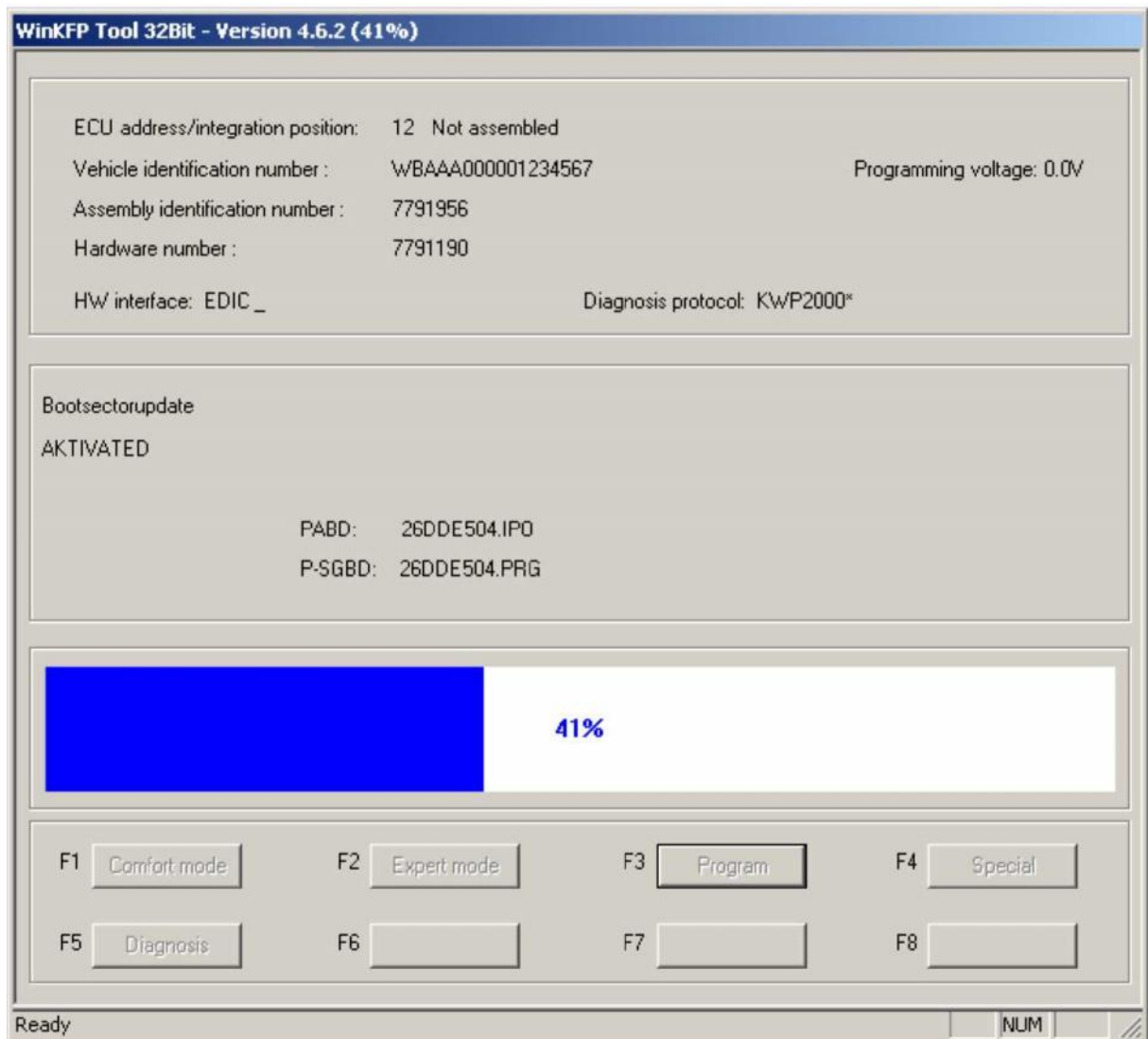
:



7-8

UIF

.. , UIF PABD  
"Cancel",  
"OK",



7-9 Flash-

(0 - 100 %)

..

WINKFPT.INI, "Programming voltage" "ANZEIGE\_U\_PROG" ON  
flash-  
<<Programming OK>>



7-10

"KOMFORT\_MIT\_AIF" WINKFPT.INI OFF.

"Program" ( <F3>).

, <<Multiple programming finished>>



7-11

7.2.2 :

"Prog. ZB-Update".

"Update ZUSB"

Comfort mode.

"Prog. ZB-Update"

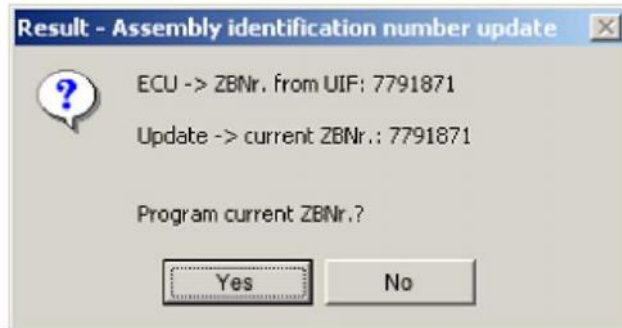
<F3>

( ) BSU

UIF

( )  
<root>\data\ecufam\ecufam.his

(= ZUSB- )  
ZUSB -



7-12

ZB-

ZB-

"No",

"Yes", ( )

**KOMFORT\_MIT\_AIF=ON**

WINKFPT.INI,

flash-



. 7-13:

UIF

"Cancel", UIF PABD  
"OK",

(0 - 100 %)

**"ANZEIGE\_U\_PROG"**

**ON**

WINKFPT.INI, "Programming voltage"

ZUSB

<<ZUSB-Update programming OK:



1	• PABD • P-SGBD •	PABD, P-SGBD
2	• • NAAB • • •	SGBD PABD P-
	• NAAB • • • •	(PABD P-SGBD), ( / ) < >

8-1: Expert mode

**8.1** **1 Expert Mode**

1 Expert

mode:

PABD  
P-SGBD

1



. 8-1: **1 Expert mode**

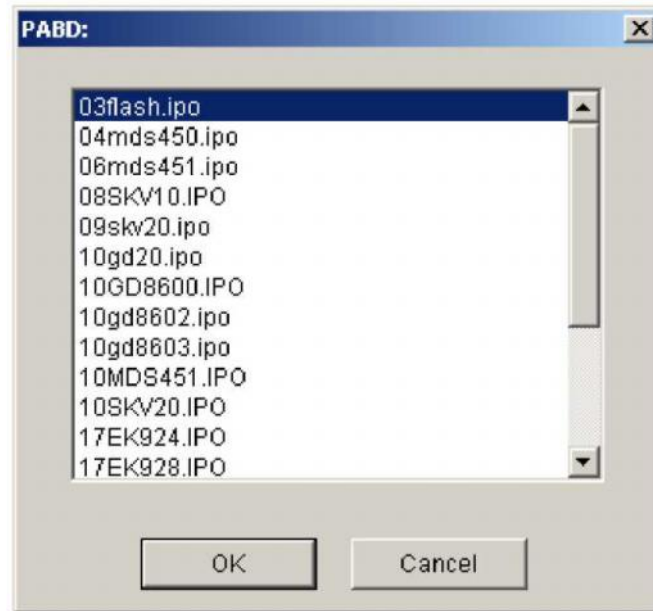
**8.1.1** : **PABD**

PABD

"PABD"

<F1>

PABD.



. 8-2: PABD

(PABD) INPA( )).

WinKFPT,  
;  
CABI- .  
CABI- the COAPI, WinKFPT  
PABD.

PABD- , ::  
17EK924.IPS -> PABD  
17EK924.IPO -> PABD

<root>\SGDAT

IPS IPO.  
**CabdFormat** WINKFPT.INI COAPI.INI ( "3.4.1  
COAPI.INI", "3.4.2 WINKFPT.INI").

• "Cancel", PABD- . PABD-

• "OK", PABD- "PABD"

PABD- , WinKFPT

P-SGBD –

P-SGBD :

1

P-SGBD

2.

PABD P-SGBD,

"Diagnosis protocol"

( .5.3.2 \_\_\_\_\_ ).

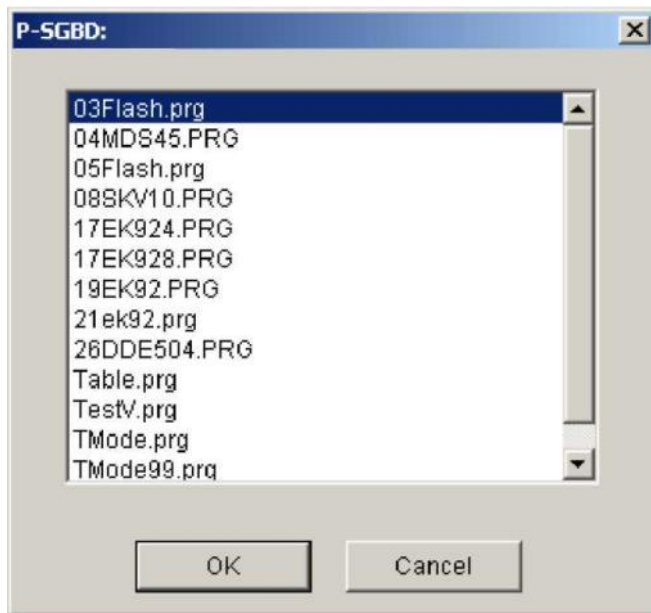
**8.1.2 : P-SGBD**

P-SGBD

" P-SGBD "

<F2>

P-SGBD:



. 8-3:

P-SGBD

<ediabas>\ECU\

PRG.

• "Cancel", P-SGBD - P-SGBD -

• "OK", PABD- "P-SGBD "

• P-SGBD - , WinKFPT

PABD -

PABD :

1

PABD

2..

PABD P-SGBD,

"Diagnosis protocol"

( .5.3.2 \_\_\_\_\_ ).



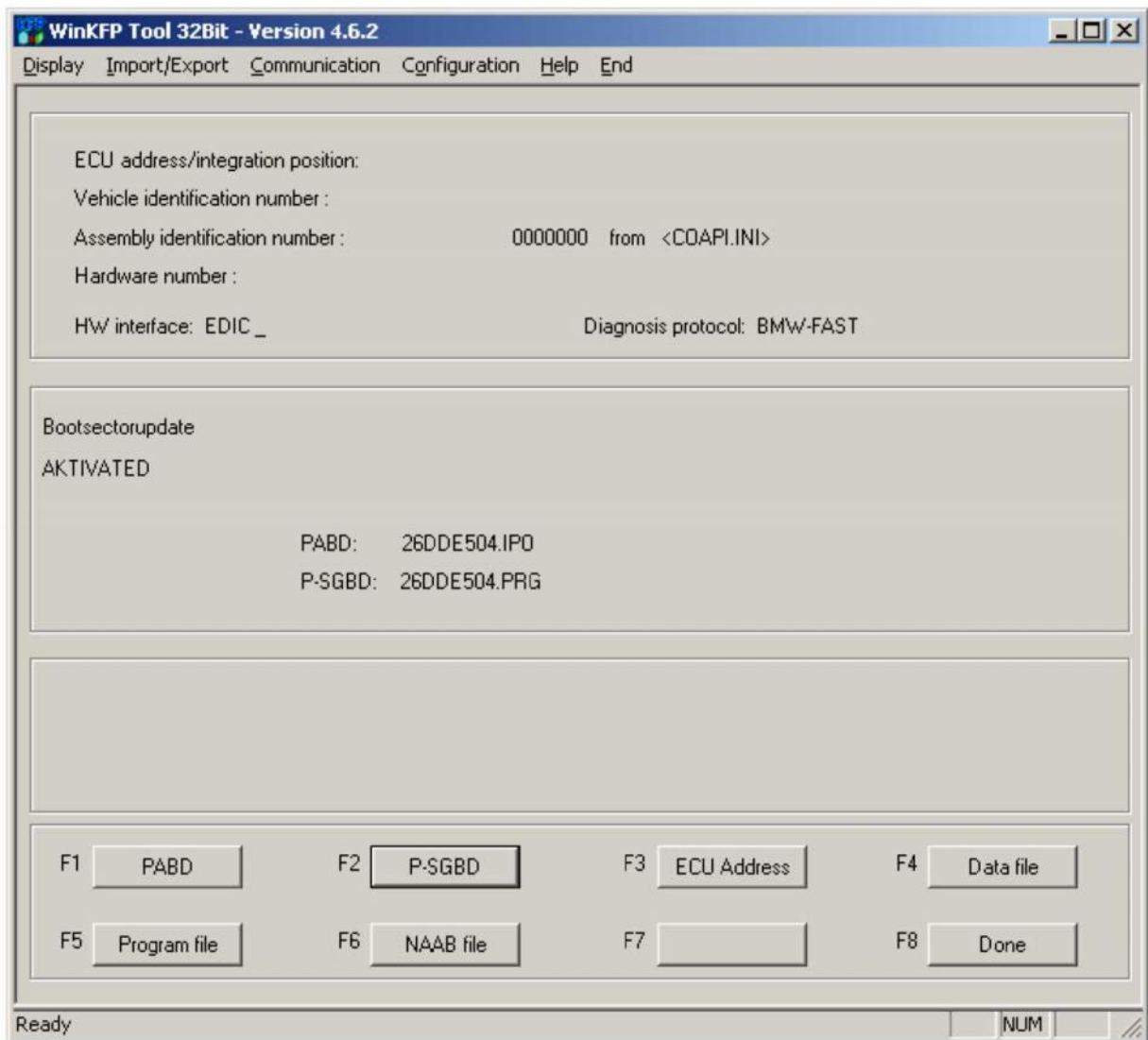
**8.2**

**2 Expert Mode**

2 Expert mode:

- - 
  - 
  - 
  -
- 
- 
- NAAB

2



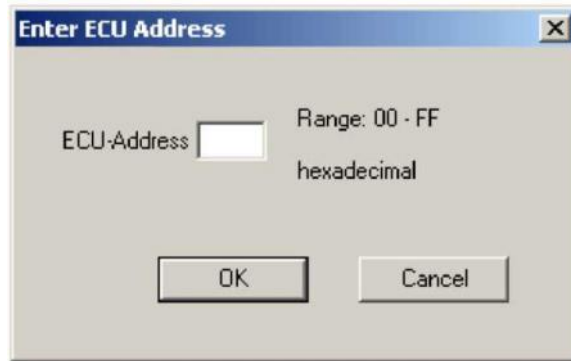
8-4:

2 Expert mode

**8.2.1** :

<F3>

"ECU Address"



. 8-5:

!

2

- "Cancel",
- "OK",

P-SGBD

P-SGBD,  
"ECU address/integration position".

P-SGBD  
P-SGBD "P-SGBD using internal address"  
"ECU address/integration position".

**8.2.2 : - NAAB -**

---

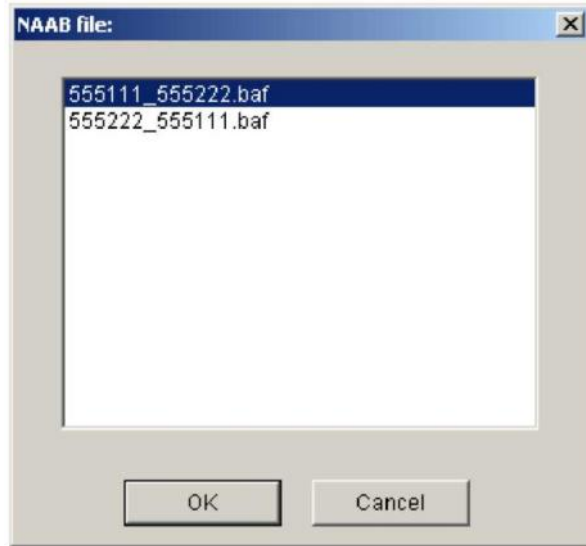
NAAB:

<F6>

NAAB

"NAAB file"

NAAB :



. 8-6:

NAAB

\<root>\data\develop

OBA BAF.

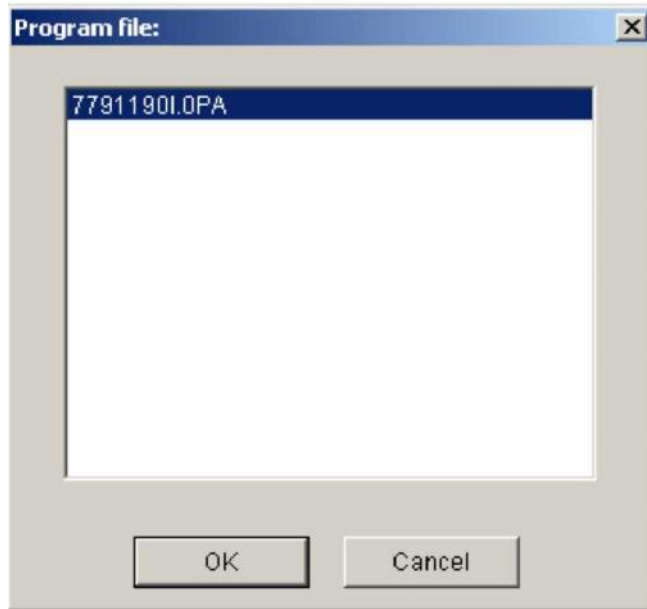
- "Cancel", NAAB - . NAAB -
- "OK", NAAB - "NAAB file".
- NAAB UIF.
- :
- :
- ( " . 8-1: ( ) Expert mode").
- Expert mode
- :
- Expert mode
- :

**8.2.3**

"Program file"

<F5>

:



. 8-7:

\<root>\data\develop

OPA PAF.

•

"Cancel",

•

"OK",

"Program file"

WinKFPT

,

( : \$REFERENZ).

:

•

:

( " . 8-1:

Expert mode").

Expert mode

•

:

:

Expert mode

•

:

:

Expert mode



. 8-8:

"DS:"

"ECU:".

Expert mode.

:

**8.2.4**

:

-

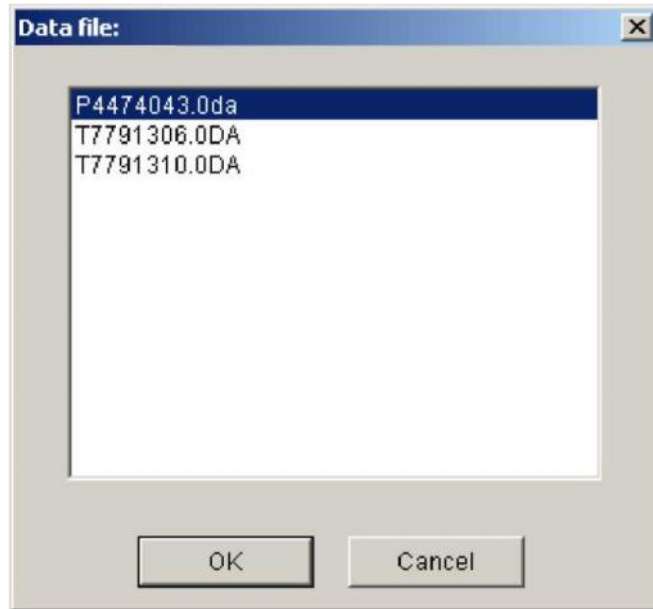
"Data file"

<F4>

(

,

):



. 8-9:

\<root>\data\develop

ODA DAF.

- "Cancel",  
( )
- "OK",  
"Data file"  
WinKFPT ,  
,  
( : \$REFERENZ).  
:  
:  
( )  
Expert mode"). . 8-1:  
Expert mode  
,  
:  
:  
Expert mode  
:  
:

:

Expert mode



8-10:

"DS:"

"ECU:"

Expert mode.

:

**8.2.5 : Done (Expert Mode)**

"Done"

1 2 Expert mode.

"Done"

<F8>

-

-

PABD

-

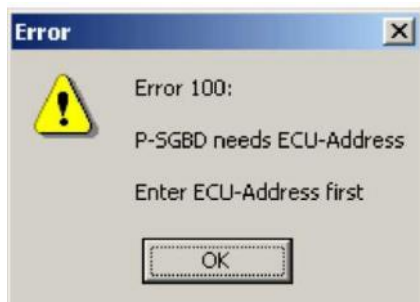
P-SGBD

-

PABD P-SGBD

address"

"P-SGBD using internal ECU address/integration position".



. 8-11:

Expert mode

“OK”,  
PABD P-SGBD

PABD, P-SGBD

( . "9 \_\_\_\_\_" ).

PABD, P-SGBD,

/

Expert mode.

### 8.3 Functions of the Programming Execution Phase in Expert Mode

Expert

mode:

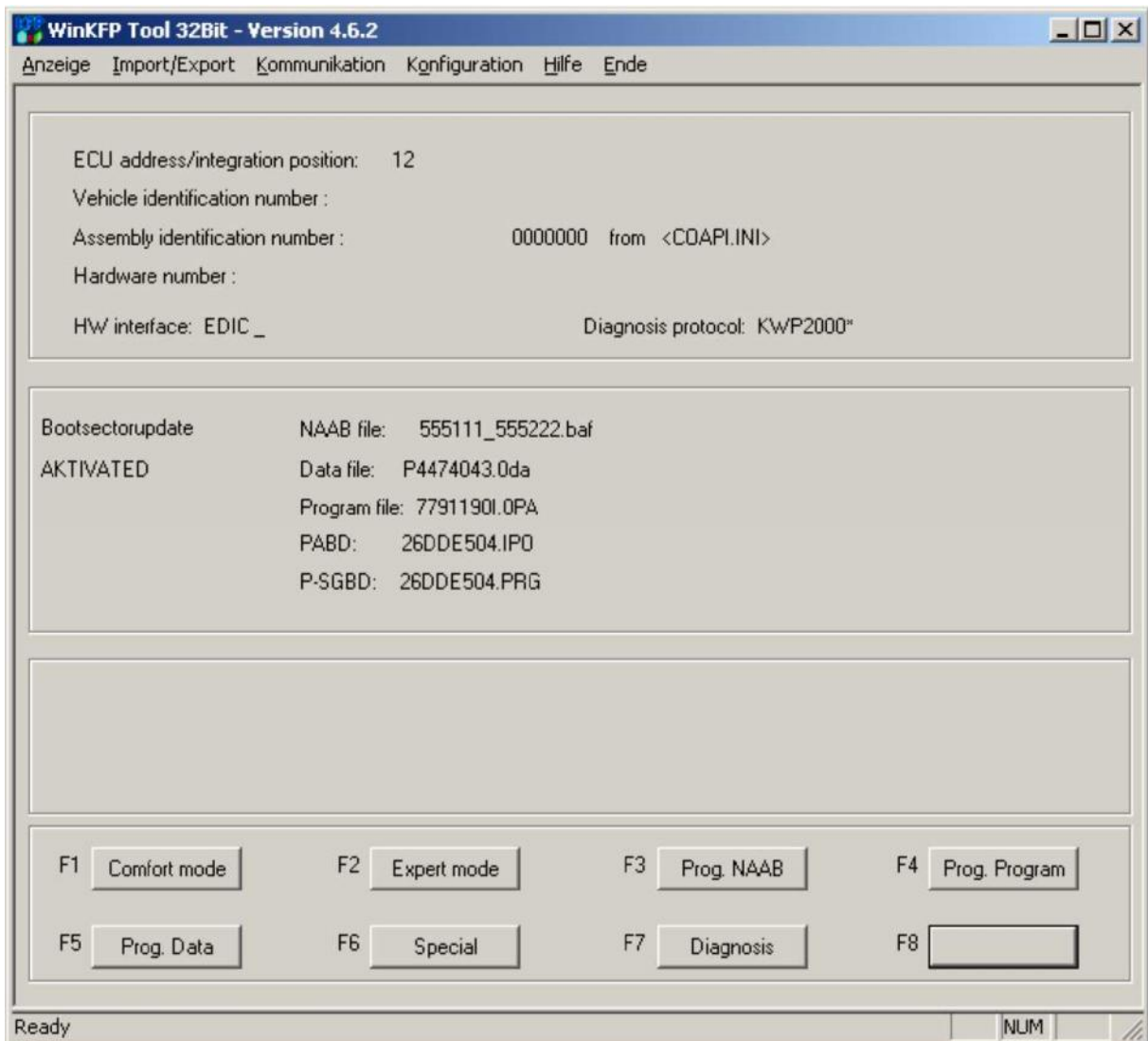
:

- "ECU address"
- "Vehicle identification number" ( Vehicle identification number is displayed only if the **EXPERT\_MIT\_AIF** entry in *WINKFPT.INI* is set to **ON**)
- "HW interface"
- "Diagnosis protocol"
- "Data file"
- "Program file"
- "NAAB file"
- "PABD"
- "P-SGBD"

Expert mode:

- • NAAB ( )
- • ( )
- • ( )
- • ( , )
- •





. 8-12:

Expert mode

**8.3.1 : NAAB**

"Prog. NAAB"

<F3>

NAAB

mode. "NAAB file"

2 Expert

(0 - 100 %)

..

"ANZEIGE\_U\_PROG"

ON

WINKFPT.INI, "Programming voltage"

flash-

<<Bootsektorupdate OK>> appears:



8-13:

Expert mode

8.3.2 :

"Prog. Program" <F3>

"Program file"

2 Expert mode.

:

WINKFPT.INI EXPERT\_MIT\_AIF ON. AIF\_SCHREIBEN\_NACH\_PROGRAMM

:

UIF  
( "7.1.4 : " ).



8-14 :

UIF

UIF PABD  
(0 - 100 %)

WINKFPT.INI, "Programming voltage" "ANZEIGE\_U\_PROG" ON

flash-  
<<Programming OK>>

**8.3.3**

**"Prog. Data"** **<F5>**  
**"Data file"** 2  
 Expert mode.  
 :  
*WINKFPT.INI*     **EXPERT\_MIT\_AIF**     **AIF\_SCHREIBEN\_NACH\_PROGRAMM**  
    **ON.**  
 :  
       *UIF*  
 ( "7.1.4 : ").



8-15 :

**UIF**

,     *UIF*     *PABD*  
 (0 - 100 %)

**"ANZEIGE\_U\_PROG"** **ON**  
*WINKFPT.INI*, **"Programming voltage"**

flash- :  
 <<Programming OK>>

**9**

WinKFPT

-

-

**"Special"**

**"Diagnosis"**



9-1

Special" "Diagnosis"

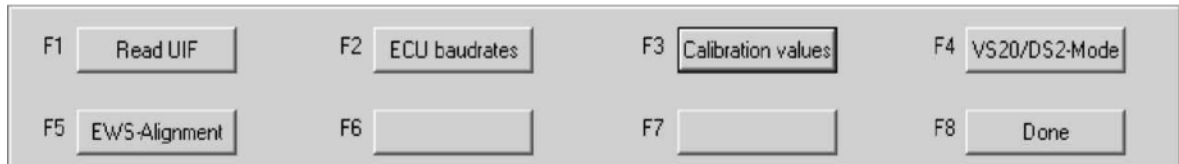
WinKFPT.

::

SGBD PABD, P-SGBD ) ( 1 2 Expert mode P-  
 / Comfort mode ZUSB-  
 : "Enter ZUSB", "Choose ZUSB" "Update ZUSB"

**9.1**

"Special" ( <F3> Expert Comfort mode, WinKFPT



**. 9-2: Function menu for the special functions**

UIF

VS20/DS2

EWS

**9.1.1 : UIF**

<F1>

UIF

"Read UIF"

UIF  
 PABD SG\_AIF\_LESEN

UIF



**9.1.3** \_\_\_\_\_ :

"Calibration values"

<F3>

) (

-  
- "Read Calib." <F1>

"Write Calib."

-  
-  
- "Write Calib."

**9.1.4** \_\_\_\_\_ : VS20/DS2

PABD

**9.1.5** \_\_\_\_\_ : EWS

**9.2** \_\_\_\_\_

"Diagnosis" ( <F4> Expert Comfort mode,  
WinKFPT

**9.2.1** \_\_\_\_\_ :

"ECU Status" <F1>

:

-  
-  
-  
-  
-  
-  
-

(ZIF)

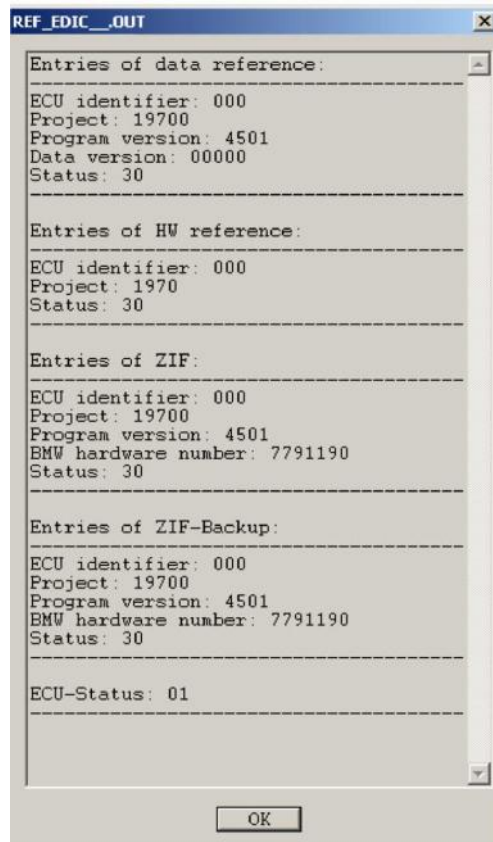
( )

PABD :

- DATEN\_REFERENZ
- HW\_REFERENZ
- ZIF
- ZIF\_BACKUP
- SG\_STATUS\_LESEN

*REF\_<Interface>\_<Unit>.OUT*                      \<root>\BIN  
*REF\_<Interface>\_<Unit>.OUT*  
**"ECU Status".**

:



**9.2.2** :

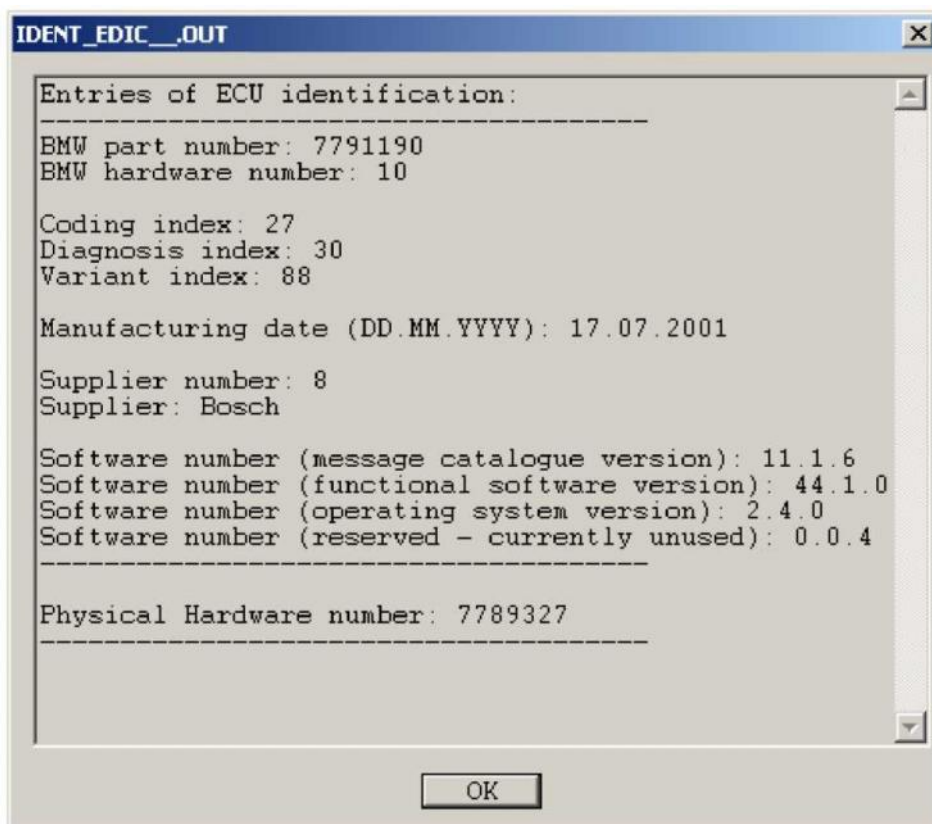
"ECU Ident" <F2>

PABD:

- SG\_IDENT\_LESEN
- SG\_PHYS\_HWNR\_LESEN

IDENT\_<Interface>\_<Unit>.OUT \<root>\BIN.  
 IDENT\_<Interface>\_<Unit>.OUT  
 "ECU Ident"

:



**9.2.3** :

"ECU intern. Temp" <F3>

PABD

- SG\_INNENTEMP\_LESEN

INNENTMP\_<Interface>\_<Unit>.OUT \<root>\BIN.



*INNENTMP\_<Interface>\_<Unit>.OUT*  
**"ECU intern. Temp"**

<ECU internal temperature not supported>

**10** WINKFPT

flash- WinKFPT :

- - - -

- - WinKFPT — EDIABAS —

- WinKFPT COAPI

- PABD P-SGBD

- (PAF, DAF, . . .)

WinKFPT ,

WinKFPT COAPI :

• WinKFPT COAPI:

/"winkfpt.txt".

/ WinKFPT.

• WinKFPT COAPI:

COAPI

COAPI.

COAPI.

COAPI

COAPI

"coapierr.txt."

**10.1**

---

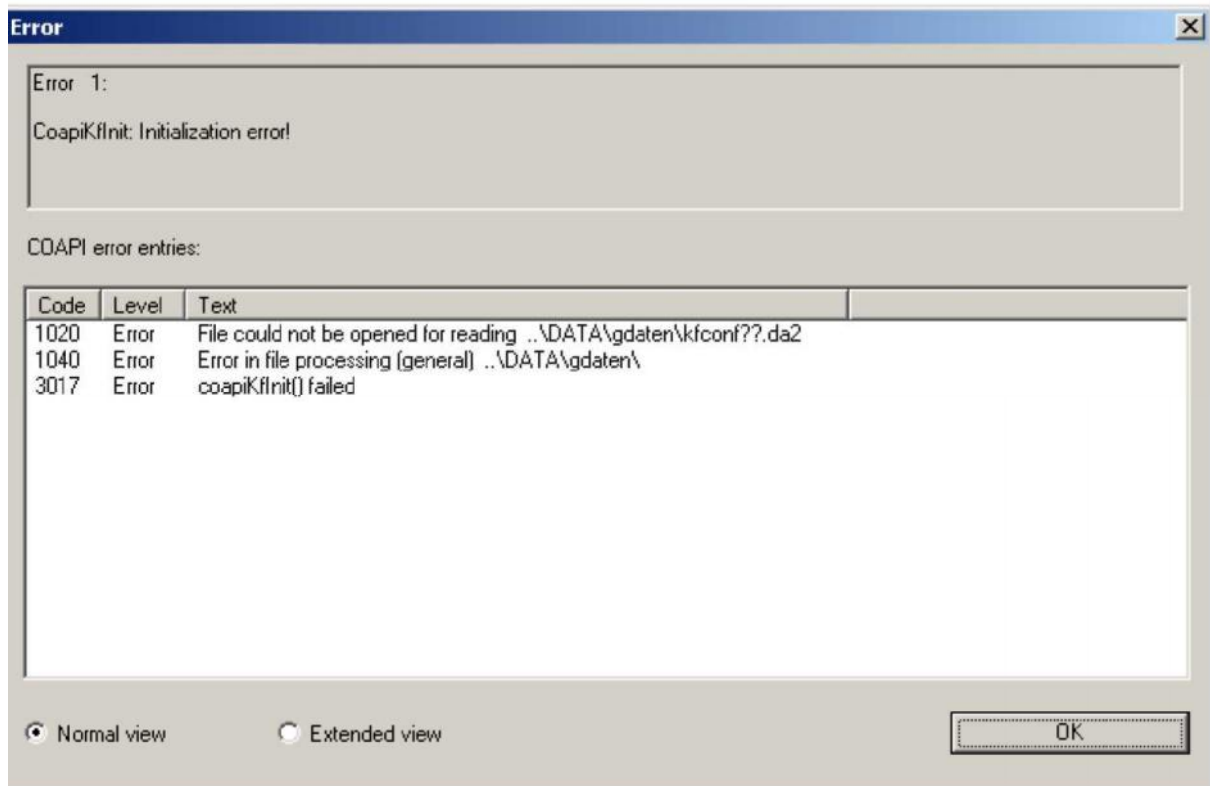
«Normal view»  
COAPI .

WinKFPT

"Extended view"

WinKFPT

COAPI



. 10-1:

WinKFPT

COAPI  
COAPI

WinKFPT.

COAPI

generally contains

..

"kfconfxx.da2"

<root>\DATA\gdaten,

**10.2**

---



	•
	WinKFPT 111
	• • • <EcuFamilyname>.dat • • Darwin).

**10.2.3**

	COAPI 1065, 1000, WinKFPT 106
	• • <Expert mode> • Comfort mode [Done] a ZB – • PABD • PABD • Ediabas
	COAPI 2000, WinKFPT 106
	• • <Expert mode>. • Comfort mode [Done] a ZB – • SGBD • SGBD • Ediabas
	COAPI 3000
	• Comfort mode ZB- • ( ) DAT- Z - • ZB-
	WinKFPT 500 503
	• Expert mode. • Expert mode. • / • / • , • , /
	COAPI 2020
	• Expert mode. • Expert mode. • : •

	• •
	COAPI 1020
	• [Program] Comfort mode. • (HWH HIS) • •
	COAPI 4209 4211, 4206, 1040, 3000
	• [Program] Comfort mode. • (DAT, HWH HIS) • ( 4206) • •
	COAPI 4204, 1040
	• [Program] Comfort mode. • ( 4204) • •
	COAPI 4220 4209, 4221, 1040,
	• Expert mode. • [Program] Comfort mode. • ( 4221) • •
	WinKFPT 100
	• Expert mode PABD SGBD, • [Done]. • SGBD •
	WinKFPT 102 103
	• Expert mode • •
	WinKFPT 107
	• ( UIF). • •

	WinKFPT 108
	<ul style="list-style-type: none"> <li>• ZB- Comfort mode.</li> <li>• ZB- .</li> <li>• 7- t ZB -</li> </ul>

### 10.2.4

	C API 2020 2021
	<ul style="list-style-type: none"> <li>• ..</li> <li>• .</li> <li>• .</li> <li>• .</li> <li>• , .</li> <li>• .</li> <li>• ,</li> </ul>
	COAPI 1060
	<ul style="list-style-type: none"> <li>• <b>&lt;Prog. Data&gt;,,</b></li> <li>• PABD, P-SGBD</li> <li>• Expert mode.</li> <li>• .</li> <li>• .</li> <li>• .</li> <li>• HW ,</li> <li>• <b>Communication HW interface</b></li> <li>• , .</li> <li>• , .</li> <li>• .</li> </ul>
	COAPI 2064: Delete error in coding data (e.g. ZCS)
	<ul style="list-style-type: none"> <li>• <b>&lt;Prog. Data&gt;,,</b></li> <li>• , PABD, P-SGBD</li> <li>• Expert mode. Expert mode</li> <li>• &lt;Done&gt;.</li> <li>• flash-</li> <li>• <b>&lt;Prog. Program&gt;.</b></li> </ul>

**CABD –**

**CABI –**

**COAPI –**

**Comfort mode –**

, ( UIF ) ,

**DAF –** flash-

**Expert mode –**

PABD,P-SGBD,

/

**HIS –** ( )

**IFH –**

**INPA –**

Interpreter for test sequences

**Interface –**

( EDIC, ADS,MOST)

**IPO –**

**IPS–**

**NAAB –**

, .

**PABD –**

**PAF–** flash-

**P-SGBD –**

**SGBD –**

**UIF –**

**Unit –**

, , A, B, C, etc.

**WDP –**

BMW

**ZIF –**

. ZIF

**ZUSB–**

, **ZB –** –